



All weather protection systems!

RETRACTABLE
AWNINGS.COM

SHADEONE®
CUBE

Rollable sail in freestanding,
puristic CUBE construction

Awnings were yesterday:

SHADEONE®

Twister-Sail



Passion for shade

SHADEONE® CUBE |

Free standing version as sun and rain protection

PURISTIC, FREE-STANDING AND SELF-SUPPORTING – with its slimline design, the **SHADEONE® CUBE** is a real eyecatcher. The textile membrane's integrated height adjustment not only offers protection from the setting sun, but also facilitates controlled water drainage. A wall connection for the **SHADEONE® Twister-Sail** is not required with this system type.



BENEFITS **SHADEONE*** CUBE

- **Filigree design** for maximum wind stability
- **Easy assembly** – fully pre-assembled system, plug-in and bolted frame
- **Fully waterproof sail membrane** – Bonded panels
- **Controlled water drainage in the rain** with one-sided height adjustment
- **34.5 m² maximum surface area per CUBE** – extendable from all sides

DELIVERY RANGE FOR **SHADEONE*** CUBE

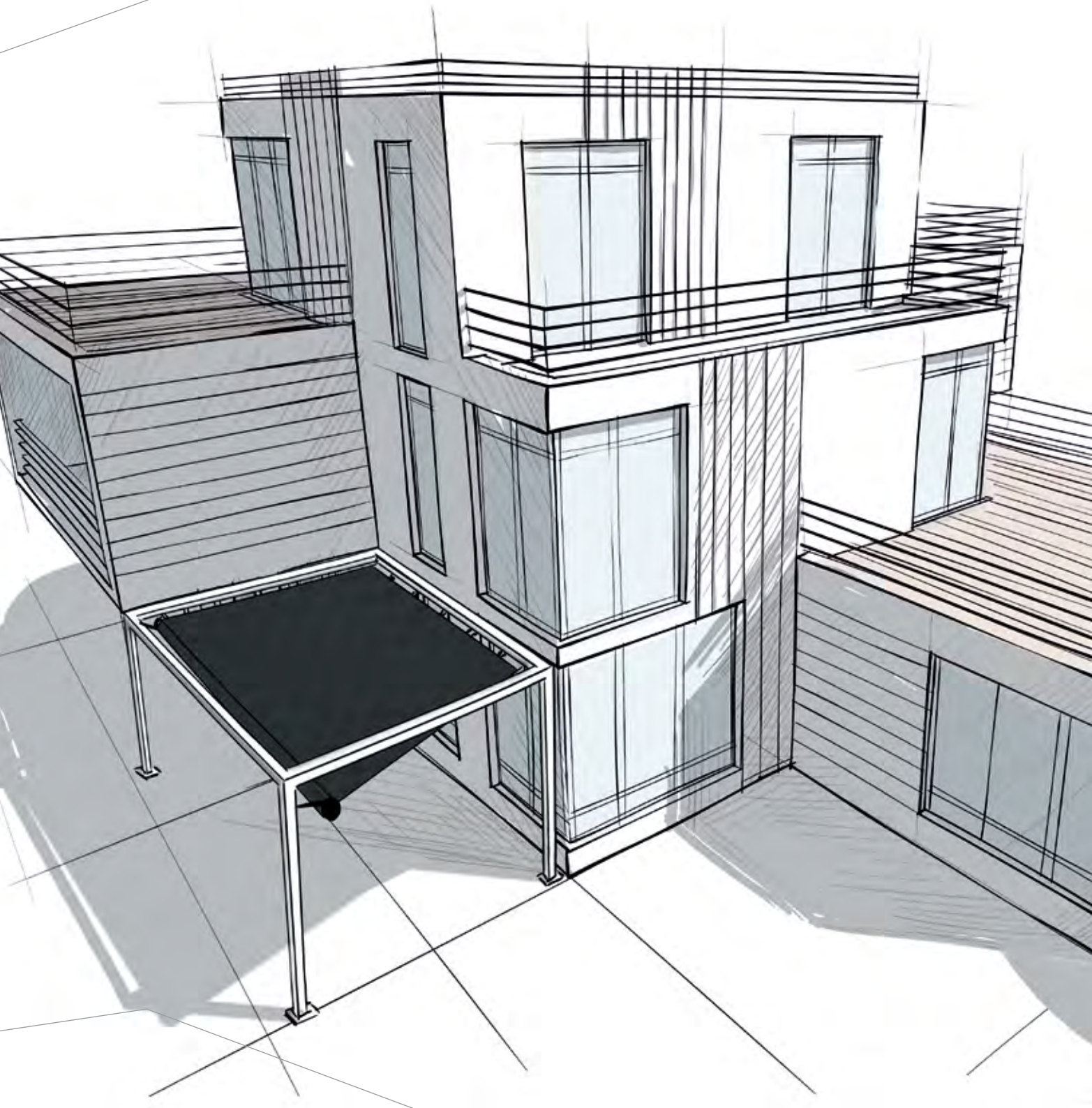
- **Complete made-to-measure Twister-Sail**
- **Height adjustment (standard):** 1-part crank lever height adjustment (right or left option) included in basic price
- **Roll-up canopy** included in basic price [avail. colours: Silver (similar to RAL 9006/ Anthracite (similar to NSC S7500-N)]
- **Stainless steel frame construction** (square tube 60 / 60 / 2 – brushed stainless steel)
- **4-part base fixing plates** (150 x 150 x 6 mm – brushed stainless steel)

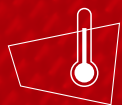
TECHNOLOGY **SHADEONE*** CUBE

- | | |
|-------------------------------------|--------|
| • Maximum equipment width | 600 cm |
| • Maximum overhang | 575 cm |
| • System height (min.) | 248 cm |
| • System height (max.) | 280 cm |
| • Drive mechanism (standard) | Manual |

SURCHARGE FOR **SHADEONE*** CUBE

- **Second crank lever height adjustment (standard)**
- **Remote control motor incl. hand held transmitter**
- **Remote control solar-powered motor incl. hand held transmitter**
- **Special RAL colour**





**ALL-YEAR-
ROUND USE**



**HIGH UV
PROTECTION**
UPF 50+



Wind-dynamic through
**FREE-FLOATING
SUSPENSION**



RAINPROOF, water runs
off automatically from an
inclination of 8+ degrees



All weather protection systems!

RETRACTABLE
AWNINGS.COM

All information contained in this document was provided by the manufacturer of the components for this particular model. As a fabricator/distributor, Retractableawnings.com Inc. claims no liability with respect to these documents as we are not engineers and did not complete any of the information, engineering or calculations in this document.

All measurements in this document are metric. To convert from metric (meters, centimeters and millimeters) to imperial (feet and inches) visit this website:
http://www.onlineconversion.com/length_common.htm