



Professional Awning
Manufacturers Association



Industrial Fabrics Association International
Proud Member



:]fYbnY



installation
manual



All information contained in this document was provided by the manufacturer of the components for this model. As a fabricator, Retractableawnings.com claims no liability with respect to these documents as we are not engineers and did not complete any of the information, engineering or calculations in this document.

INDEX

Components list	1
Exploded Drawings	2
Optional accessories	3-5
Installation measures diagram	6
Assembly diagrams	7-16
Protective hood WARNING - READ CAREFULLY	16
Assembly instructions	17
Dimensions and technical details	18-19
Loose fabric swags configurations	20
Patented features	21
Profile and fabric drilling details	22
Overhanging fabric configuration	23
Aluminum profiles/fabric coupling diagram	24
Fabric measures	25
Loose fabric spacing tape measures	26
Side track routing detail	27
Fix carrier and front bar detail	27

All rights reserved. No part of this manual may be reproduced, stored or transmitted in any form or by any means, electronic, mechanical, photocopying or otherwise without prior written permission of RetractableAwnings.com.

The instructions and information contained in this manual are the most current as of the date of printing.

RetractableAwnings.com reserves the right to make any changes and modifications at any time without previous notice.

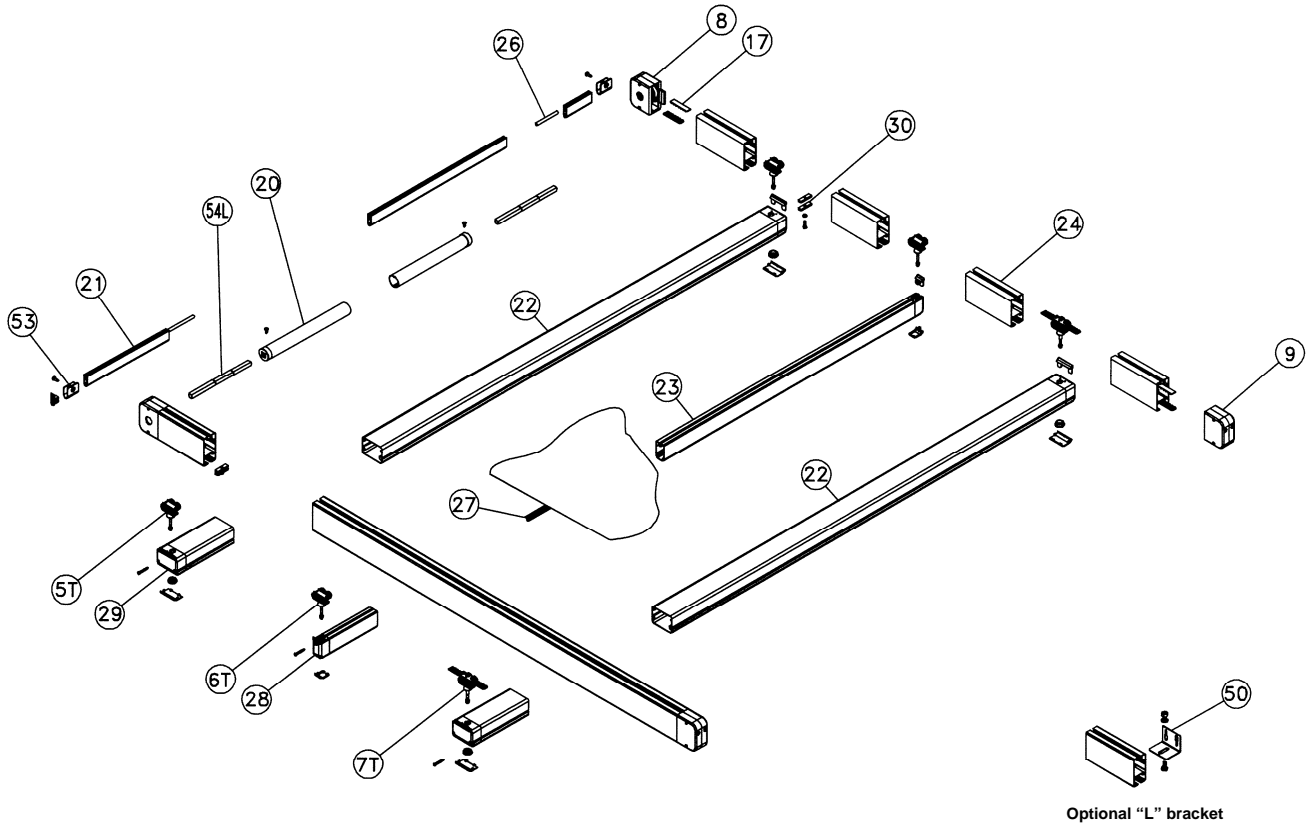
: IF9BN9

Components list

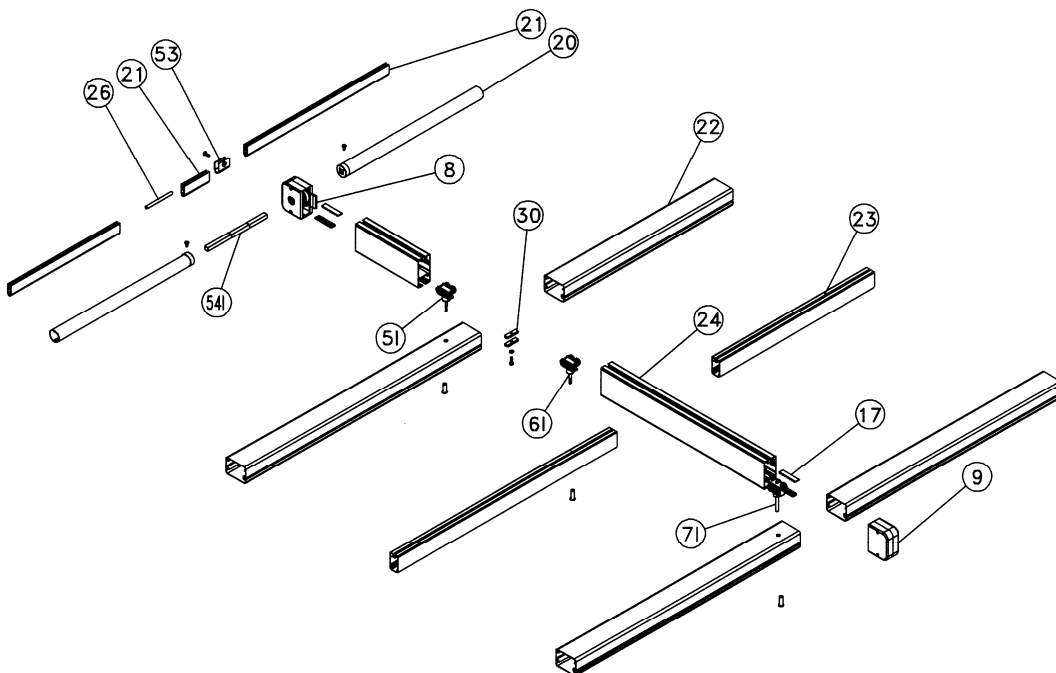
<i>REFERENCE #</i>	<i>ITEM DESCRIPTION</i>
5/T	FIX CARRIER ASSEMBLY MAIN SECTION OUTER TRACKS (ClicSystem®)
5/I	FIX CARRIER ASSEMBLY INTERMEDIATE SPAN SECTION
6/T	MOVING CARRIER ASSEMBLY MAIN SECTION OUTER TRACKS (ClicSystem®)
6/I	MOVING CARRIER ASSEMBLY INTERMEDIATE SPAN SECTION
7/T	MASTER CARRIER ASSEMBLY MAIN SECTION OUTER TRACKS (ClicSystem®)
7/I	MASTER CARRIER ASSEMBLY INTERMEDIATE SPAN SECTION
8	DRAWING CRANKCASE ASSEMBLY
9	PULLING CRANKCASE ASSEMBLY
10	WINDBREAK PROFILE END CAP ASSEMBLY
11	FRONT BAR PROFILE END CAP ASSEMBLY
17	DRIVE BELT
20	DRIVE SHAFT PIPE 40 mm DIA. (1 9/16")
21	ALUMINUM PROFILE FOR FABRIC BACK POCKET
22	FRONT BAR EXTRUDED ALUMINUM PROFILE
23	WINDBREAK EXTRUDED ALUMINUM PROFILE
24	SIDE TRACK EXTRUDED ALUMINUM PROFILE
26	PVC TUBING 7.2 mm (9/32")
27	WELDING PVC STRIP (WELDED TO FABRIC)
28	NO-DRIP WINDBREAK PROFILE END CAP ASSEMBLY
29	NO DRIP FRONT BAR PROFILE END CAP ASSEMBLY
30	FIX CARRIER END STOP ASSEMBLY
53	BRACKET FOR BACK POCKET ALUMINUM PROFILE
54/L	SQUARE DRIVE SHAFT MAIN SECTION (OUTER TRACKS)
54/I	SQUARE DRIVE SHAFT INTERMEDIATE SPAN SECTION
	ADDITIONAL AND OPTIONAL ITEMS
<i>REFERENCE #</i>	<i>ITEM DESCRIPTION</i>
42	BRACKET FOR ADDITIONAL TRANSVERSAL BEAM
47	SAFETYBOX® MOTOR GEAR ASSEMBLY (WALL APPLICATION)
48	SAFETYBOX® MOTOR GEAR ASSEMBLY (AD'L TRANSV. BEAM APPLICATION)
49	ADDITIONAL TRANSVERSAL BEAM ASSEMBLY
50	"L" BRACKET FOR INSTALLATION ON EXISTING STRUCTURES
55	LOOSE FABRIC SWAGS CONFIGURATION SPACING TAPE
60	PROTECTIVE HOOD ASSEMBLY (100 CM DEPTH - 39 3/8")

: IF9BN9 Exploded drawings

1-Span unit

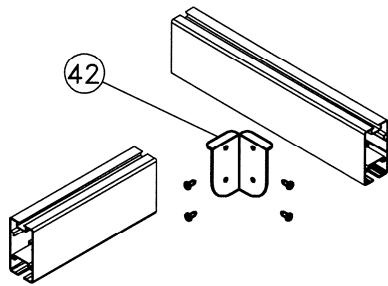


2/3-Span unit - intermediate section

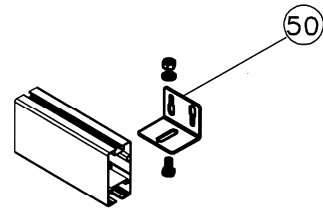


: IF 9 BN9

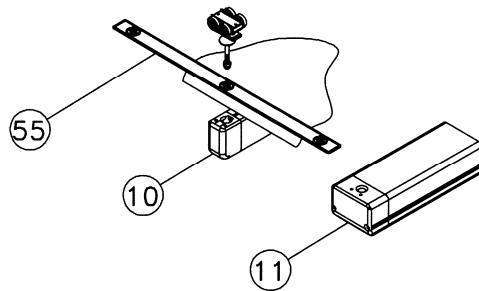
Optional accessories



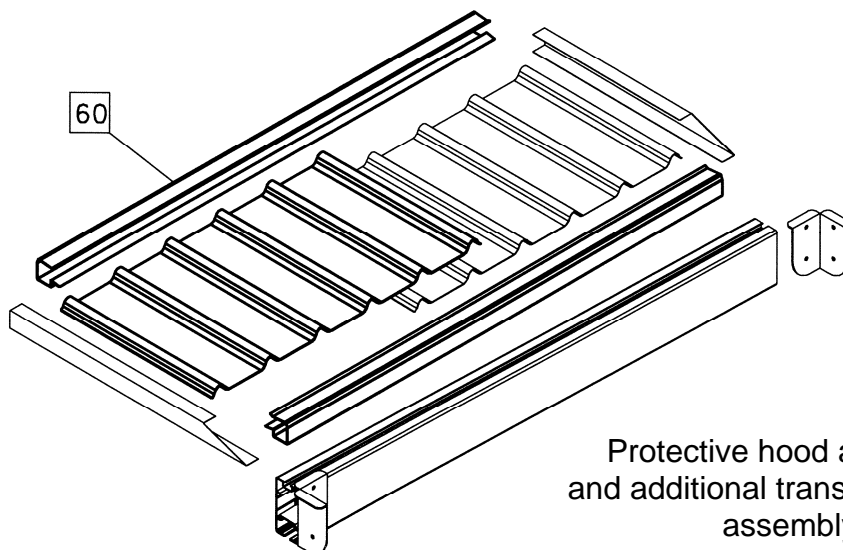
Bracket for additional transversal beam



“L” bracket for installation on existing structures



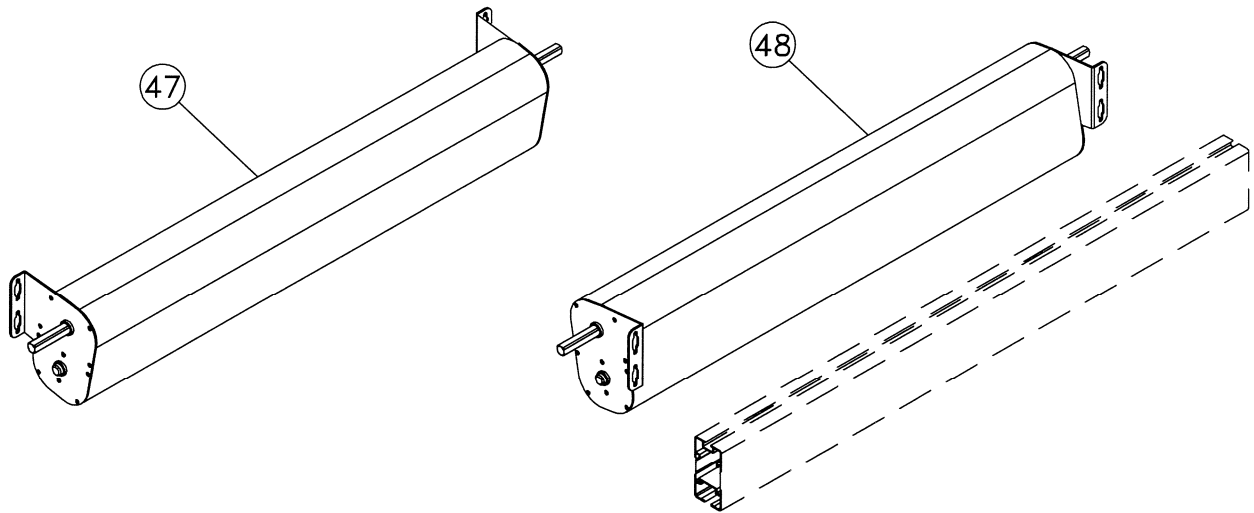
Loose fabric spacing tape



Protective hood assembly and additional transversal beam assembly

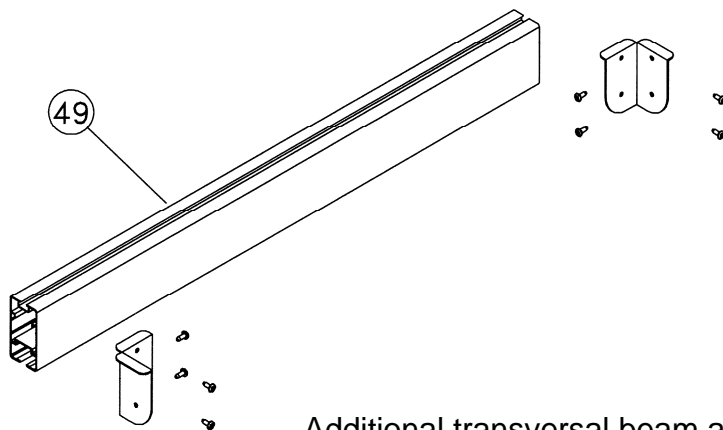
: IF9BN9

Optional accessories



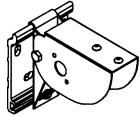
(47) SafetyBox® motor gear assembly (wall application)

(48) SafetyBox® motor gear assembly (additional transversal beam application)

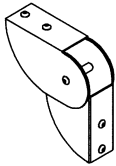


Additional transversal beam assembly

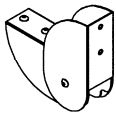
: IF9BN9 Optional accessories



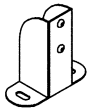
Wall bracket Ø100PZ0 PLUS (Ref. 40)



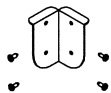
Complete elbow Ø100PZ0 PLUS (Ref. 44)



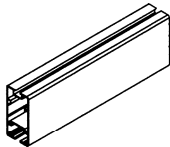
Complete elbow Ø100PZ0 PLUS for front mount (Ref.



Floor mount foot bracket Ø100PZ0 PLUS (Ref. 45)



Bracket for additional transversal beam Ø100PZ0 and Ø125PZ0 PLUS (Ref. 42)



Additional transversal beam

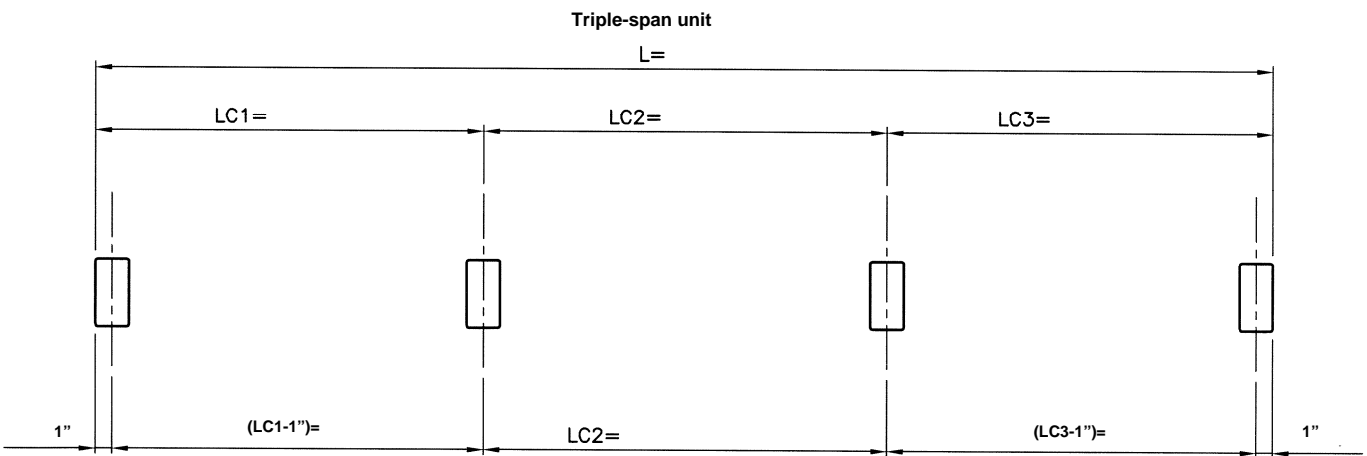
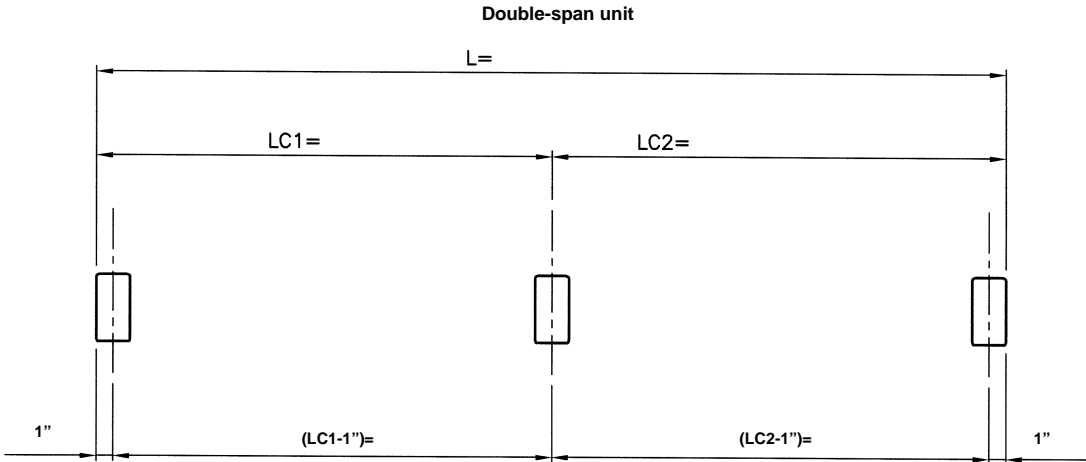
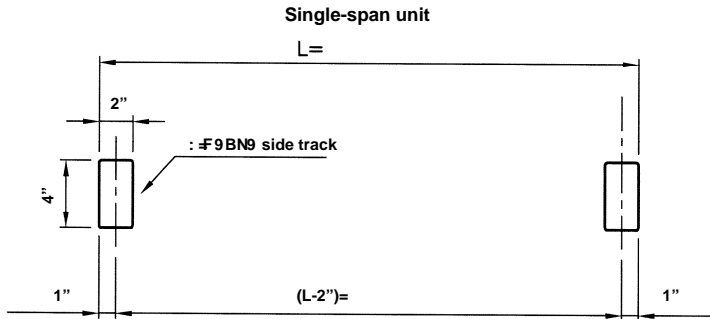


“L” bracket for installation on existing structures (Ref. 50)

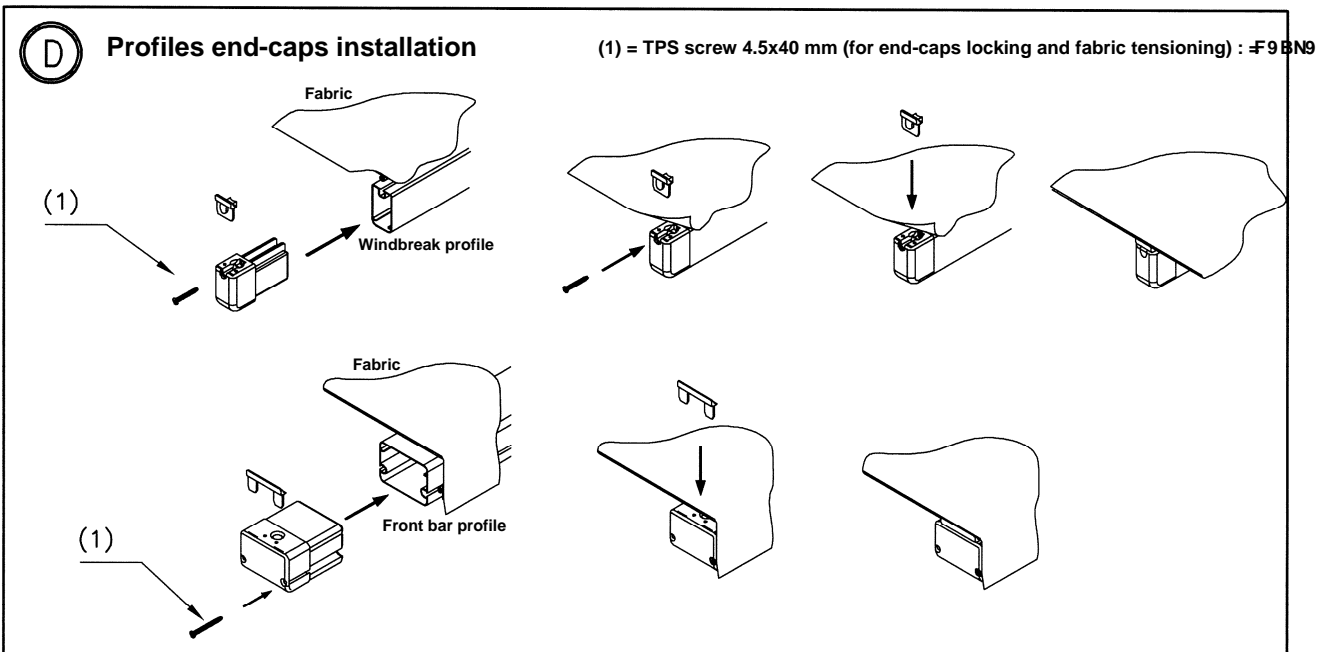
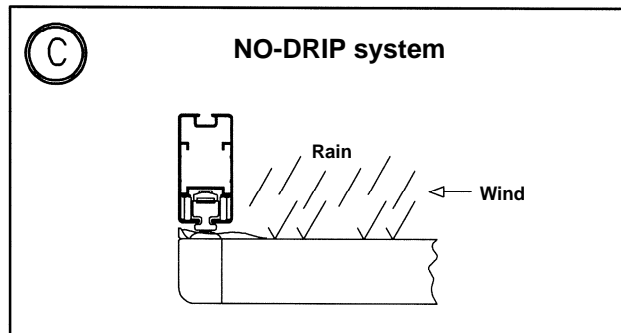
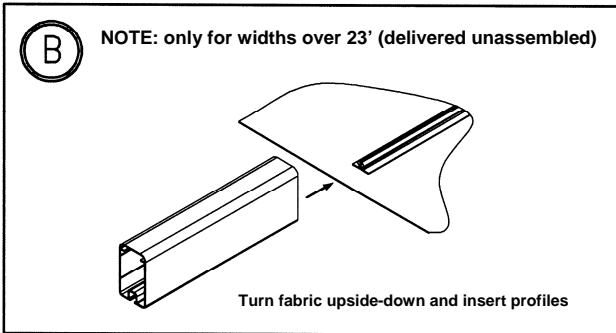
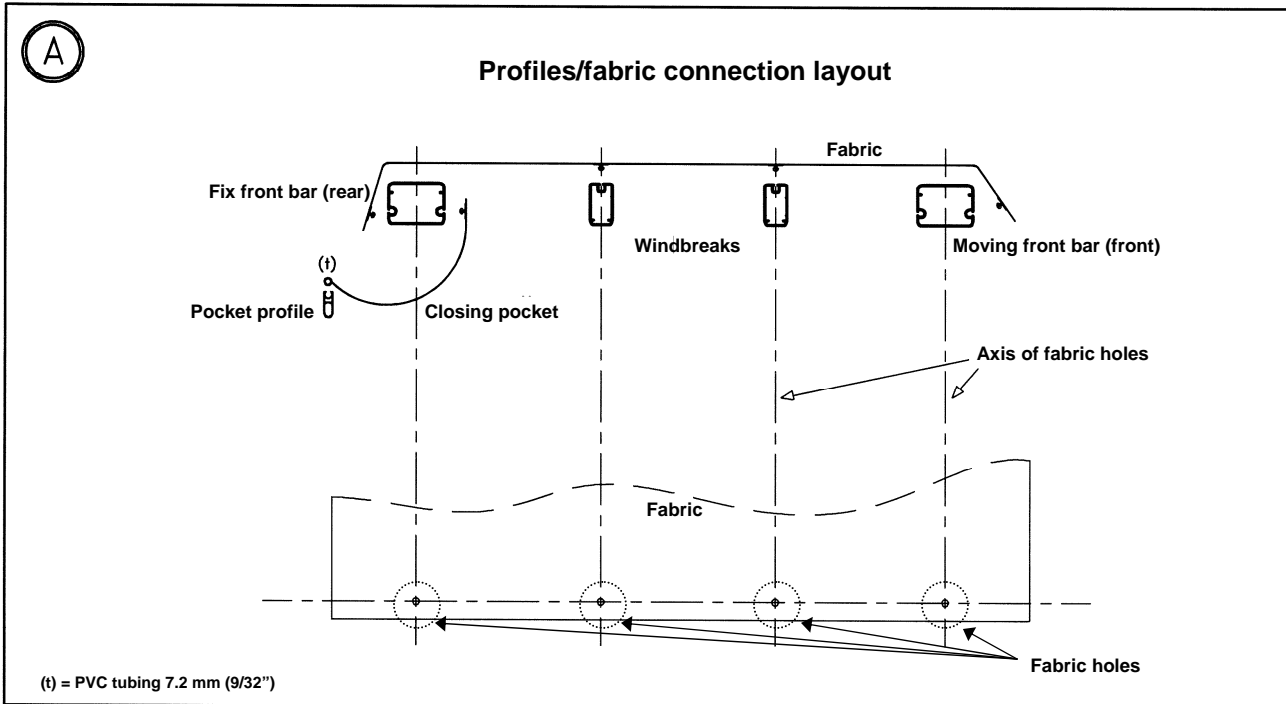
: IF9BN9 Installation measures diagram

Layouts and intermediate measures sheet

Width (L)= Span Width (LCx)= Projection (P)=



: F9BN9
Assembly diagram



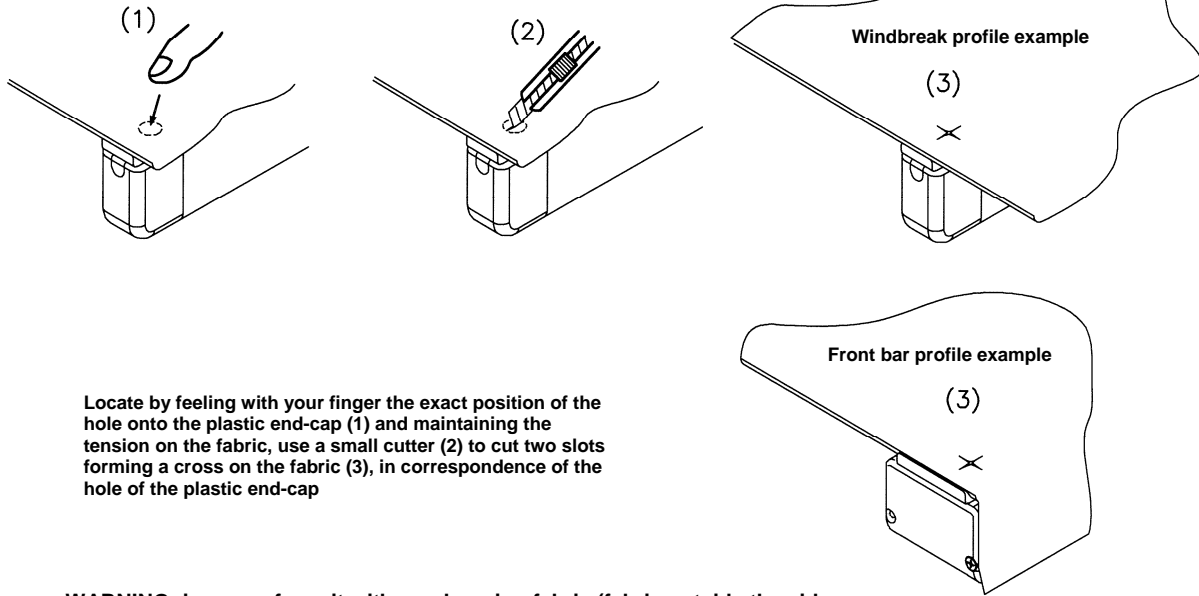
: IF9BN9 Assembly diagram

E Fabric slotting/drilling detail

NOTE: slot/drill the fabric only AFTER it has been installed onto the aluminum profiles
(pay particular attention to avoid damaging the fabric itself and the end-cap locking system)

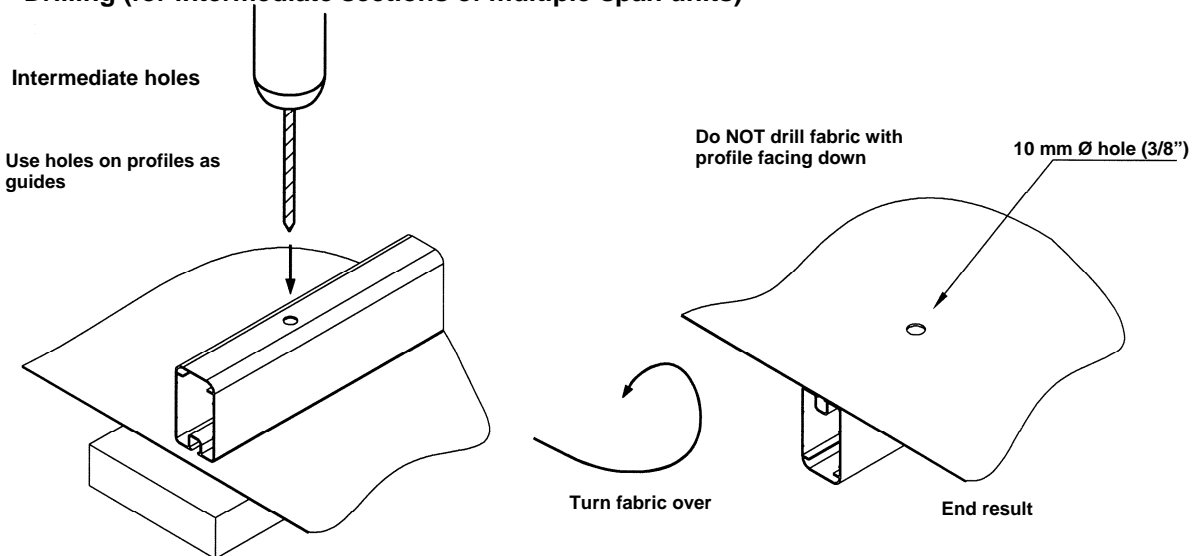
Slotting (for single span units, or two outer sides of multiple-span units)

Fabric edges slots



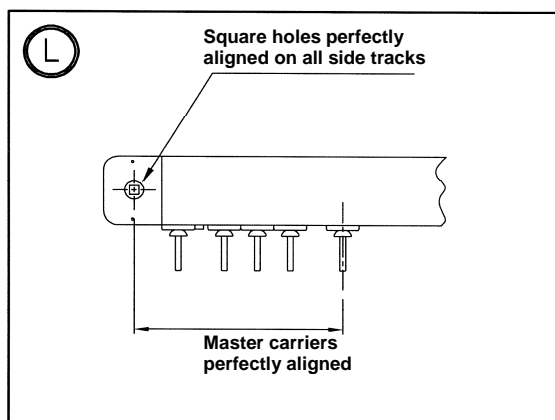
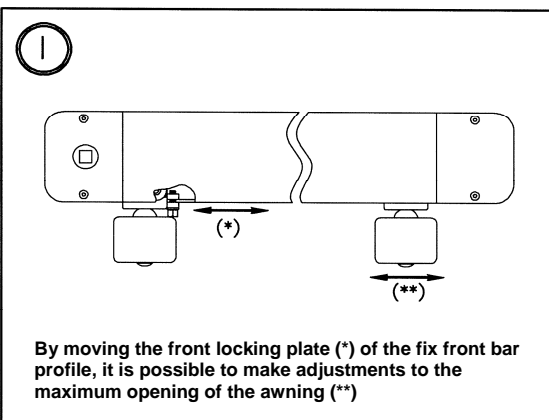
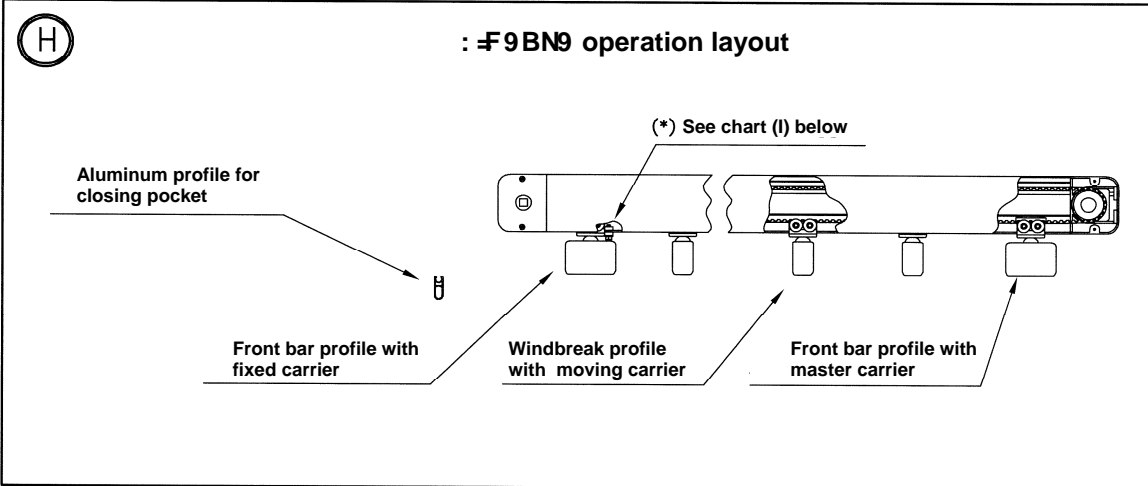
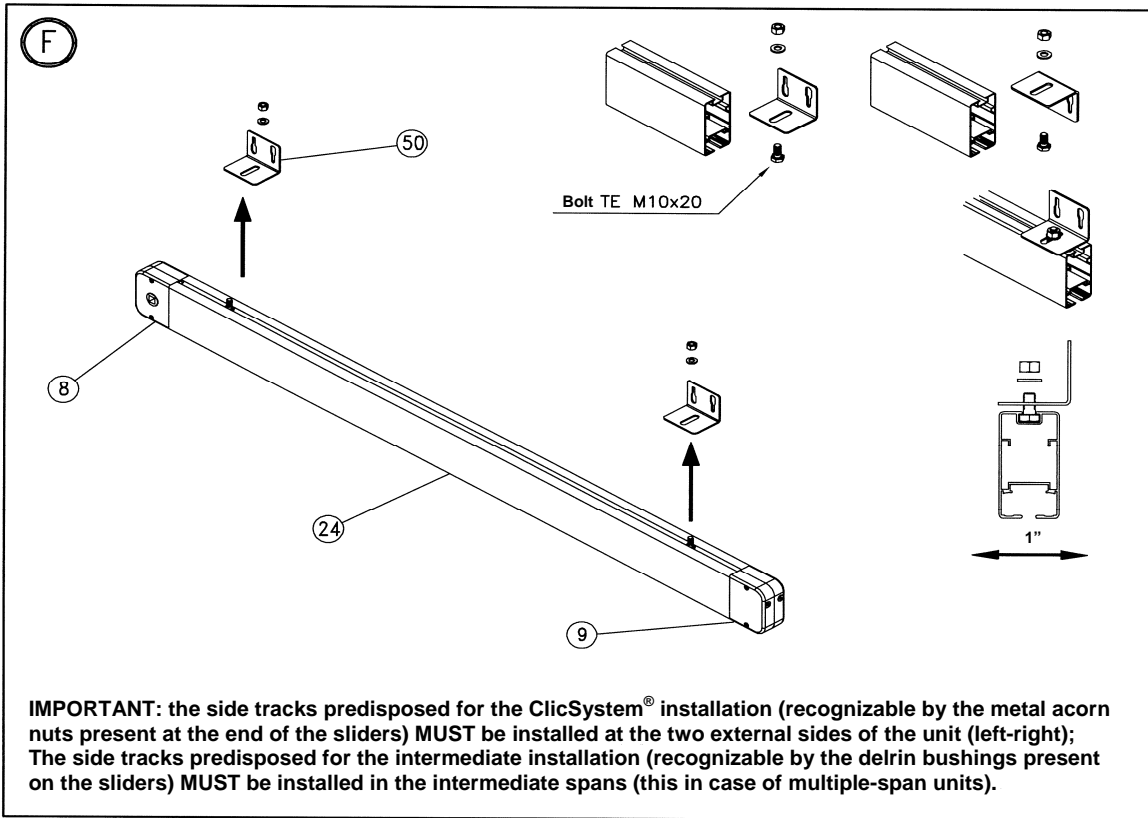
WARNING: in case of a unit with overhanging fabric (fabric outside the side tracks), the ClicSystem® cannot be used, therefore no fabric slotting has to be made

Drilling (for intermediate sections of multiple-span units)



Lay down fabric with aluminum profiles facing up onto a rigid but drillable surface (i.e. a wood block), and drill the fabric with a 10 mm (3/8") bit in correspondence of the holes existing on the aluminum profiles.

: F9BN9
Assembly diagram

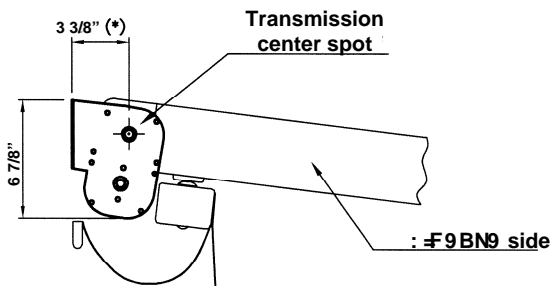
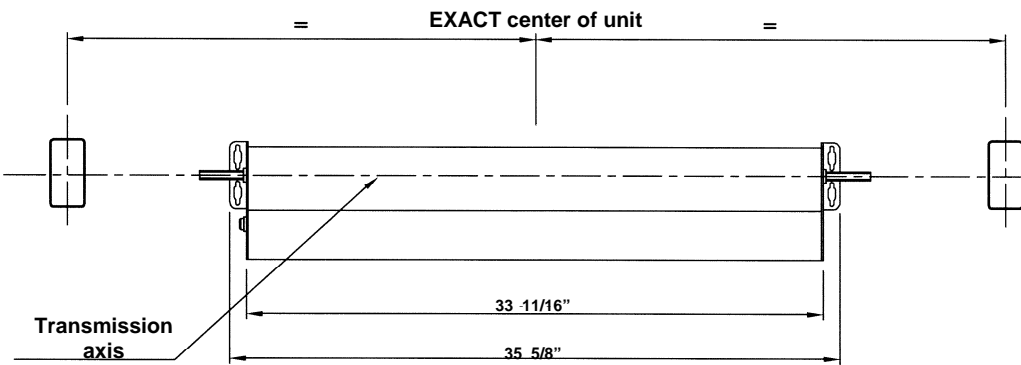
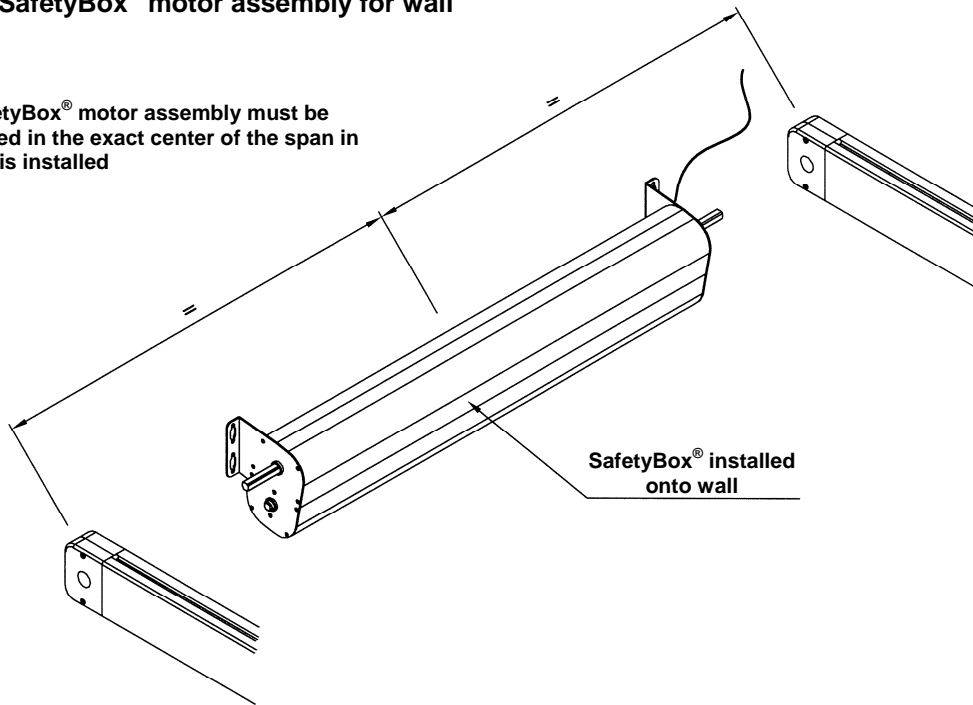


: F9BN9
Assembly diagram



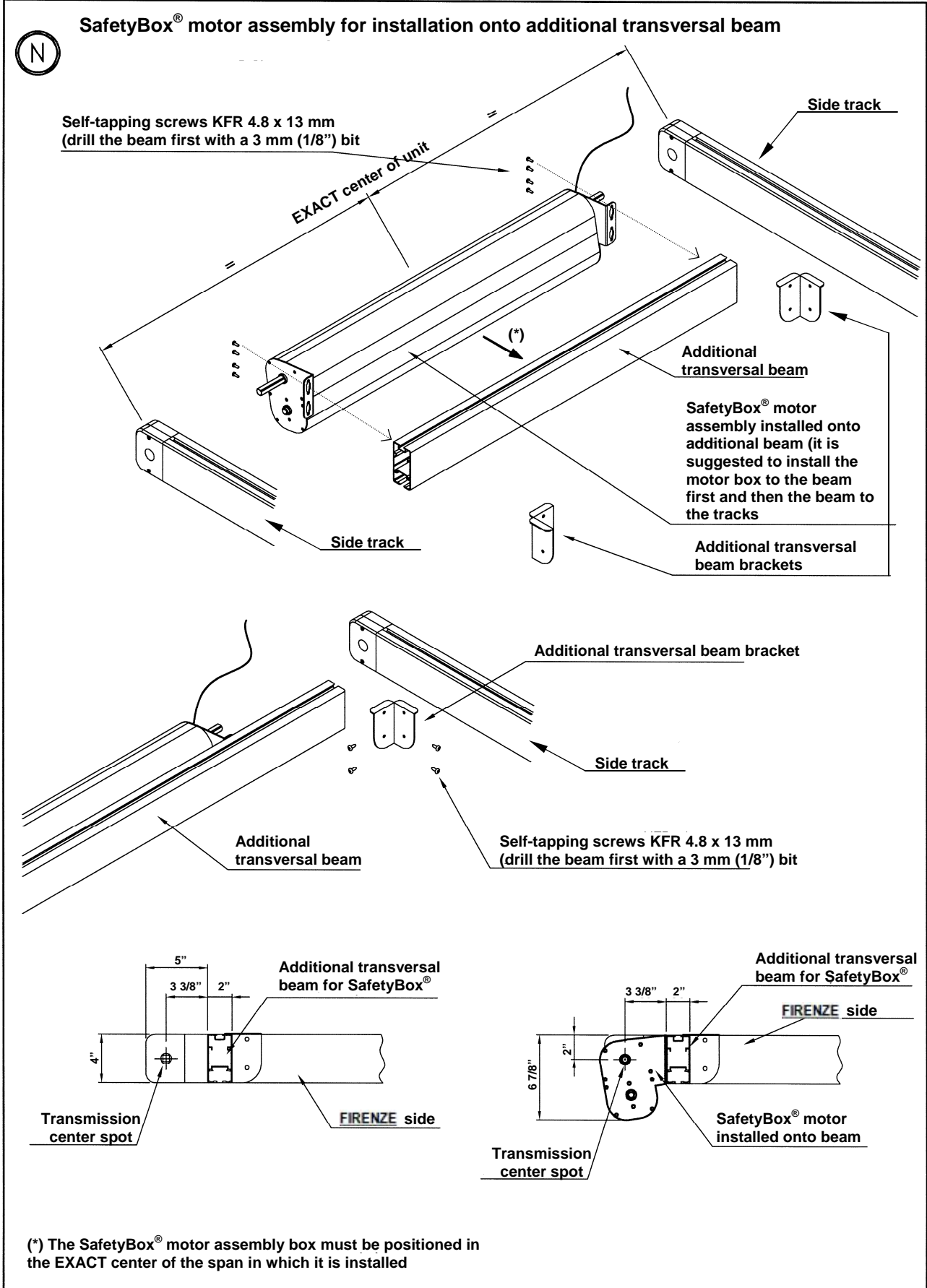
SafetyBox® motor assembly for wall

The SafetyBox® motor assembly must be positioned in the exact center of the span in which it is installed



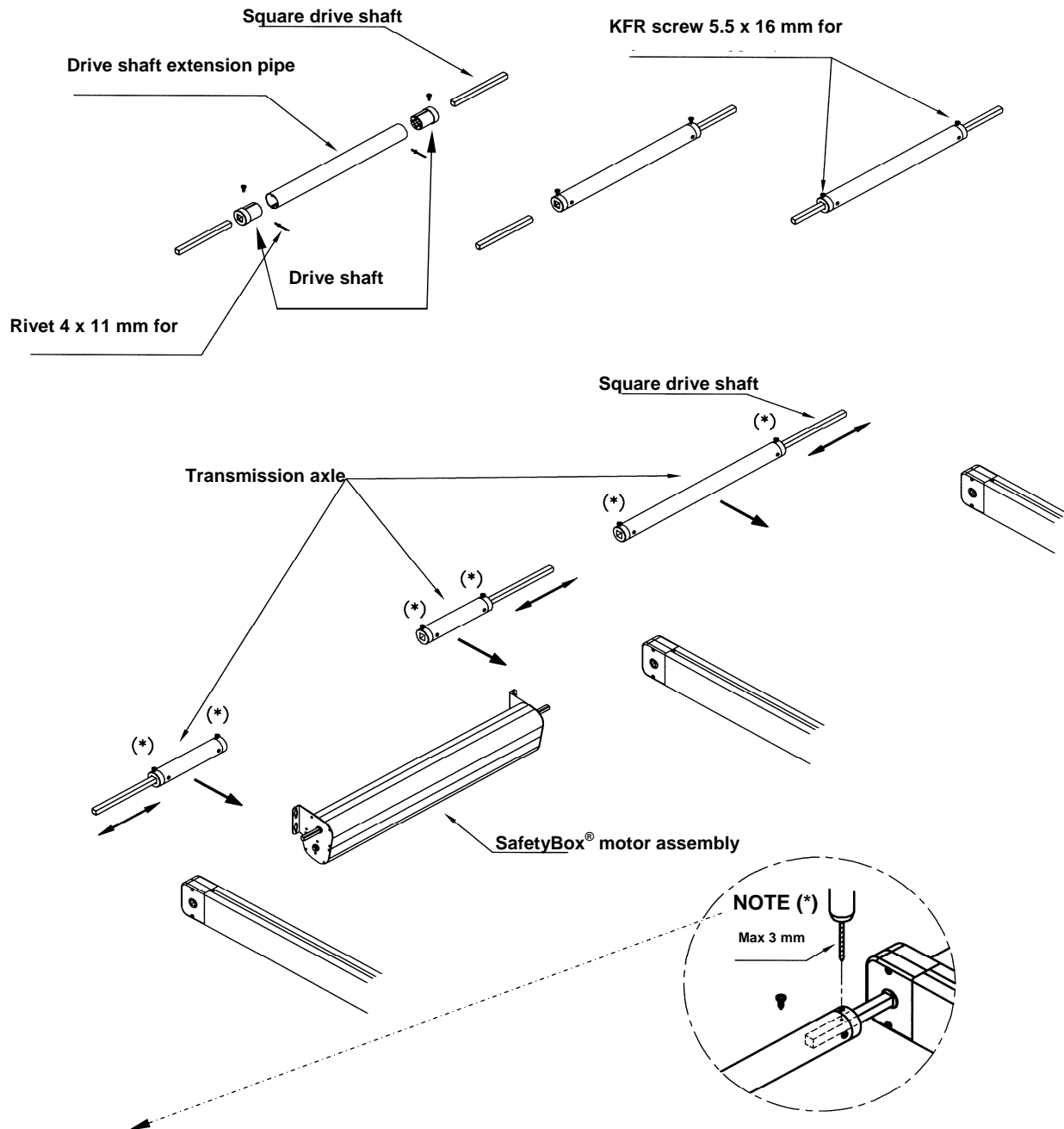
(*) It is possible to use the wall installation of the SafetyBox® motor assembly ONLY IF the axis of the transmission is at the EXACT distance indicated (3 3/8" from the wall). If different, the additional transversal beam must be used instead

FIRENZE Assembly diagram



: F9BN9 Assembly diagram

① Transmission axle assembly layout

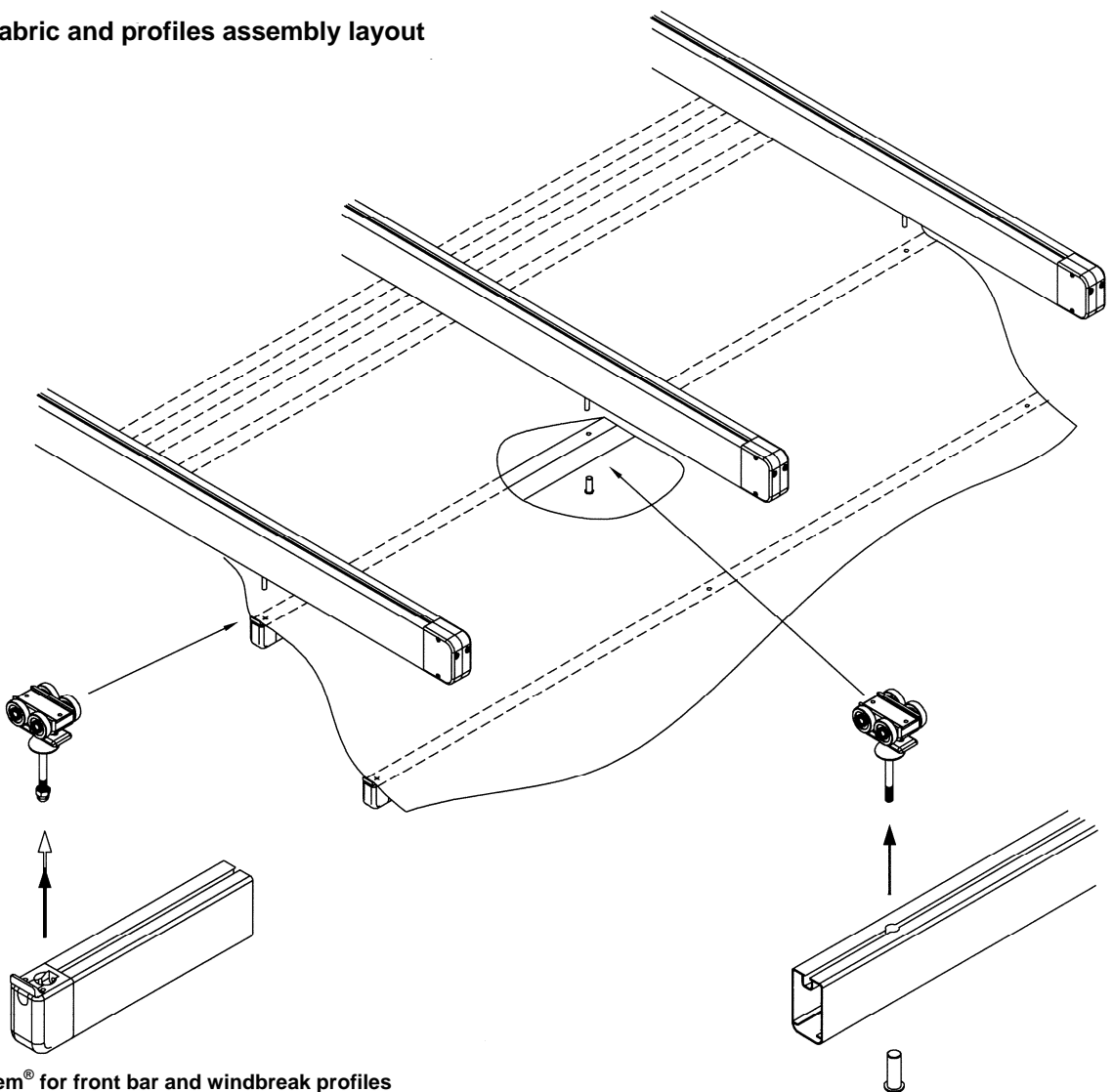


(*) Once completed the assembly of the transmission axle and correctly positioned all the square drive shafts, unscrew the KFR 5.5 x 16 screws from the extension pipes end caps, and slightly tap the square shaft with a 3 mm (1/8") drill bit; screw then back into the KFR 5.5 x 16 screws for the definitive locking of the square drive shaft into position. This tapping, max 1 mm deep (1/16"), will help the screws to better lock the shaft into position and avoid future slipping due to vibrations etc.

WARNING: Make sure all master carriers (#7) are pushed all the way to the retracted position to ensure proper timing of the drive belts prior to set in position the square drive shafts (#54), then tighten the screws on the plastic end caps to lock the drive shafts in position. Failure in doing so might result in the misalignment of the drive belt and the malfunctioning of the unit.

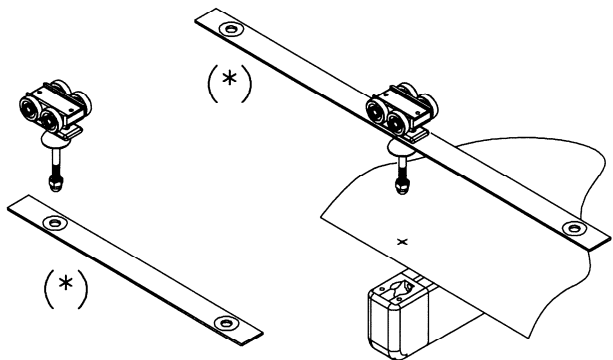
: F9BN9
Assembly diagram

P Fabric and profiles assembly layout



ClicSystem® for front bar and windbreak profiles installation onto outer tracks. This patented system allows an easy installation of the fabric onto the metal structure. Just push the end of the end cap of the profiles onto the carriers until you hear the “click”, which means a proper installation.

DELRIN bushing for installation onto carriers of intermediate sections tracks (multiple span units)



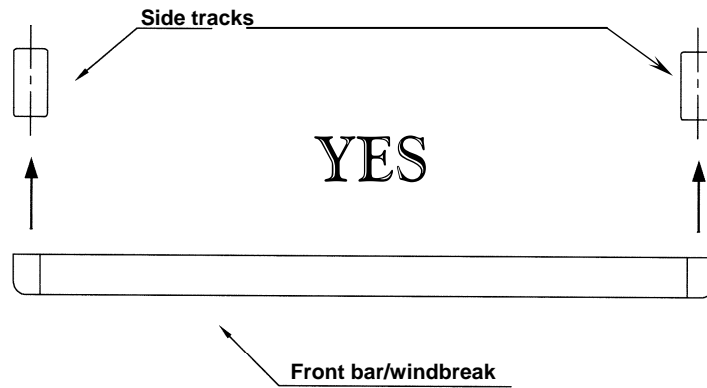
(*) For units manufactured with loose fabric swags, a spacing tape with eyelets will be supplied for each side track, to be inserted onto the carriers (above the neoprene washers) before snapping the profiles on. To insert the spacing tape, unscrew the acorn nut from the carriers, remove the neoprene washer, position the tape and then reassemble the washer and the acorn nut back in place. For intermediate sections, remove the neoprene washer, position the spacing tape, and reinsert the washer below it prior to securing the tracks with the DELRIN bushings onto the carriers.

WARNING: over-tightening the acorn nuts could cause their breakage and damage to the carriers

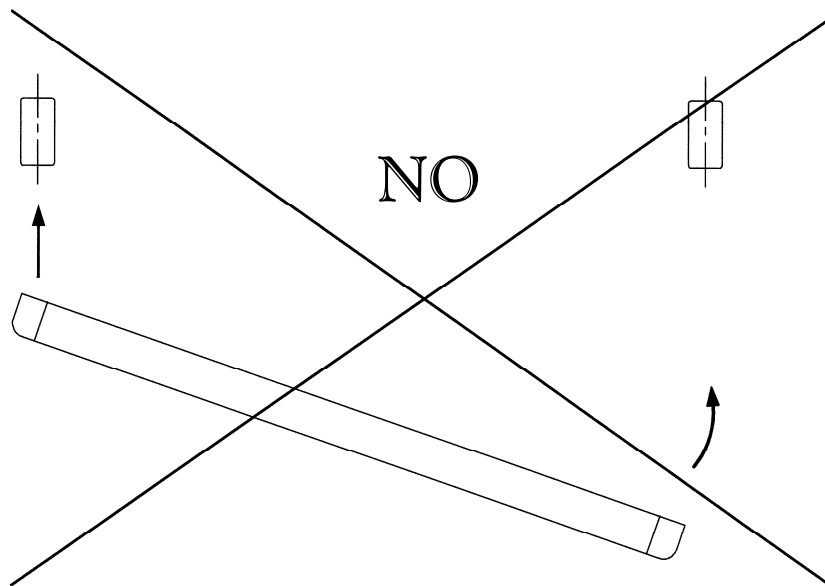
: F9BN9
Assembly diagram

Q Fabric installation WARNING

In order not to damage the ClicSystem® and the intermediate sections carriers, it is mandatory to install the fabric making sure the profiles are ALWAYS PERFECTLY PARALLEL to the axis of the side and intermediate tracks.



NEVER try to install the fabric attaching the profiles from one side first and then the other!



Damaging the ClicSystem® and the profile anchoring system by improperly installing it onto the tracks will make the unit inoperable and could create a danger for the people involved.
SERIOUS INJURY MAY OCCUR!

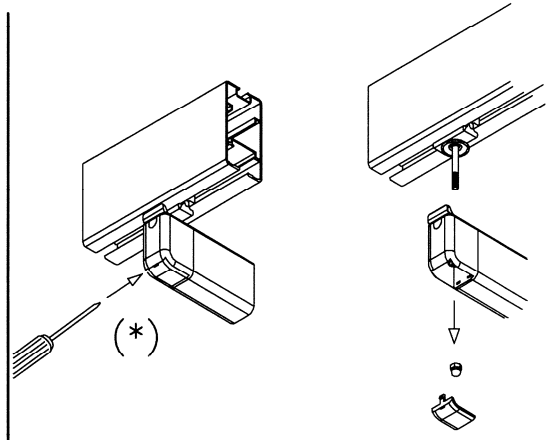
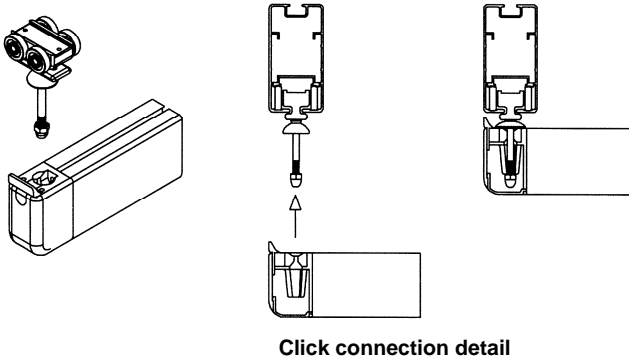
: F9BN9
Assembly diagram

R

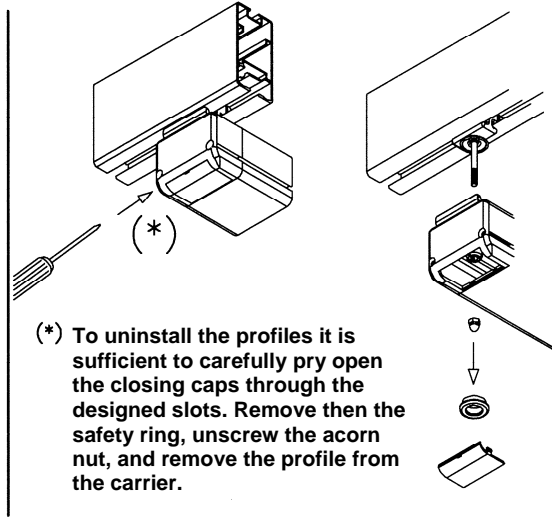
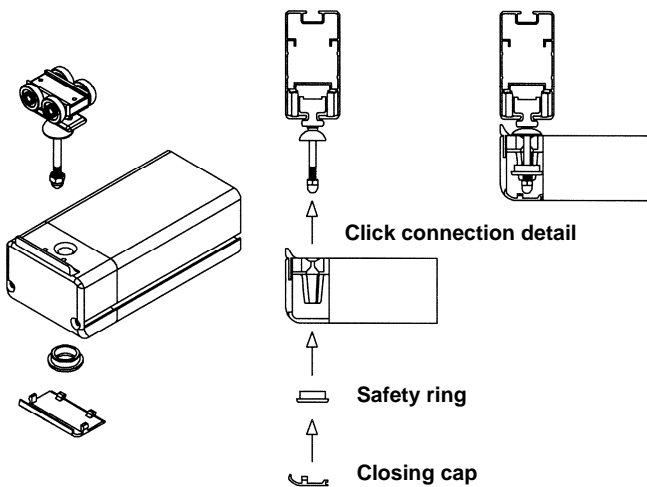
ClicSystem® layout details

WARNING: on the intermediate sections tracks of multiple-span units and on units with overhanging fabric (fabric outside the outer side tracks) it is not possible to utilize the ClicSystem®

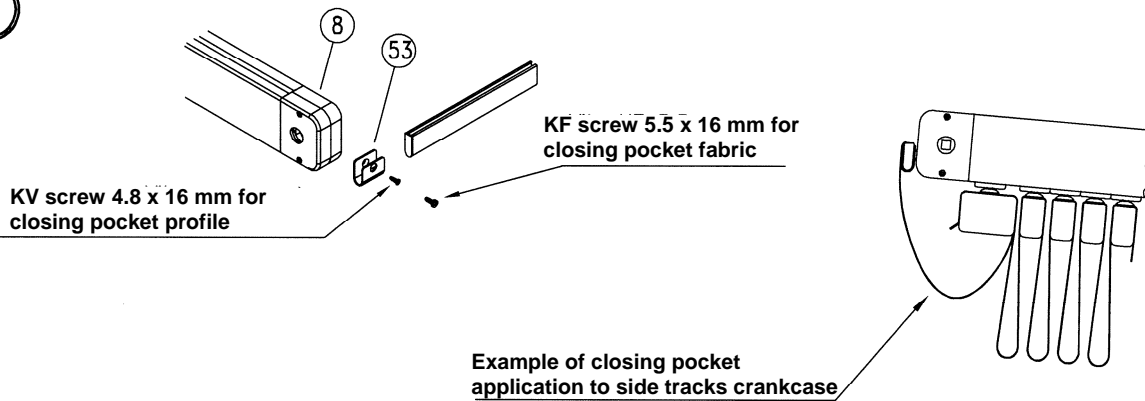
ClicSystem® for windbreak



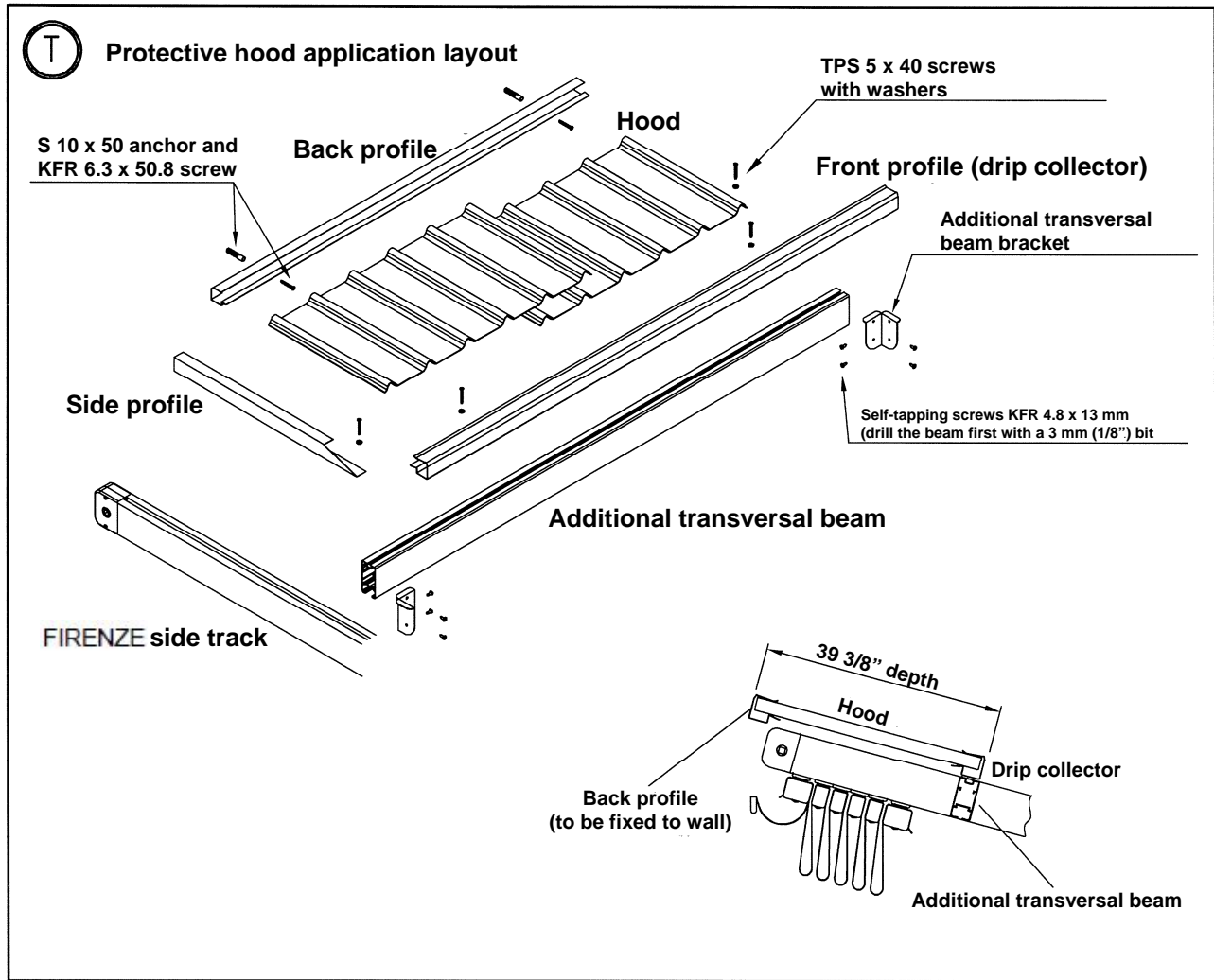
ClicSystem® for front bars



S



FIRENZE Assembly diagram



WARNING: Be advised that unless the back part of the patio cover is installed under an eave with a 40" minimum depth, some type of cover **MUST** be installed over the section of the FIRENZE that is retracted when closed, to avoid the water from pooling in the fabric loops and the fabric back pocket.

Notice also that the SafetyBox® motor assembly has to be protected from the rain at all times. If not using our optional protective hood, something similar **MUST** be used instead.

We decline any responsibilities for damages occurred to the FIRENZE caused by the non compliance of the above notice.

: F9BN9

Assembly instructions

Units with widths up to 23' (700 cms)

The side tracks (#24) are delivered with carriers (#5) (#6) (#7), fix carrier end stops (#30), drive belt (#17), drawing and pulling crankcases (#8) (#9) already assembled.

The front bars (#22) and the windbreak profiles (#23) come already coupled to the fabric.

Units with widths over 23' (700 cms)

The side tracks (#24) are delivered with carriers (#5) (#6) (#7), fix carrier end stops (#30), drive belt (#17), drawing and pulling crankcases (#8) (#9) already assembled.

The front bars (#22) and the windbreak profiles (#23) will be supplied in separate sections with all the splices already in place to easily assemble the sections together.

Once all the front bars and windbreak sections are assembled together to form the total width of the unit, insert the welding PVC profile (#27) welded onto the fabric into the windbreak and front bar profiles (**diagrams A and B**). Insert the fabric back pocket and the related aluminum profile how described on **diagram A**. Insert the front bar and windbreak profiles end caps (#28) (#29) and tension the fabric by tightening the relative screws (**diagram D**); drill carefully the 10 mm Ø holes onto the fabric in correspondence of the holes on the aluminum profiles (**diagrams A and E**), in order to allow the insertion of the carriers' pivots.

CAUTION: Drill the fabric only **AFTER** it has been coupled to the aluminum profiles, using the holes of the profiles as guide.

CAUTION: In order to allow an easier insertion of the PVC strips onto the aluminum profiles, we suggest you spray beforehand the channels with silicone.

INSTRUCTIONS

- 1) Open all the boxes with care, paying attention not to damage the fabric or scratching the aluminum profile with the use of cutters or other tools.
- 2) Install the side tracks (#24) making sure they will be perfectly aligned to the transmission axis (**diagram M**) of the patio cover. On request, additional "L" brackets (#50) can be ordered in order to solve the most common cases of installation (**diagram F**). **NOTE:** the method of installation of the side tracks can change in order to accommodate the various types of applications. If in doubt, please contact Customer Service to study each individual case and suggest the best solution to your specific needs.
- 3) Check the perfect alignment of all the carriers (**diagram L**), then proceed with the installation of the motor box onto the additional transversal beam (#49) or to the wall, according to your needs (**diagrams M and N**), making sure the drive shaft is perfectly aligned and works on a perfect straight line. If not already in place, insert the plastic caps onto the 40 mm Ø drive shaft pipe and install the drive shaft to all the awning spans. **Make sure all master carriers (#7) are completely pushed to the retracted position to ensure proper timing of the drive belts prior to set in position the square drive shafts (#54)**, then tighten the screws on the plastic end caps to lock the drive shafts in position (**diagram O**). **READ WARNING SHOWN AT THE BOTTOM OF DIAGRAM O VERY CAREFULLY.**
- 4) In case of motor box installed onto the additional transversal beam (optional item) it is necessary to install the extra beam to the side tracks drilling 3 mm (1/8") holes onto the extra beam and the side tracks and securing the two parts together using the provided brackets and the KFR 4.8 x 13 mm self-tapping screws (**diagram N**).
- 5) Attach the windbreak profiles (which have been previously coupled to the fabric) to the side tracks, inserting **ONE WINDBREAK AT THE TIME** onto the corresponding carrier pivot either inserting the plastic end cap to the ClicSystem® pivot for standard units or using the DELRIN bushing for the intermediate sections or overhanging units (**diagrams P, Q and R**). **CAUTION:** before closing the end caps of the front bars with the plastic cover, make sure that all safety rings are securely in place (**diagram R**). Please note that here are no safety rings in the windbreaks end caps.
- 6) **CAUTION:** in case of units with loose fabric swags, a spacing tape with eyelets will be supplied for each side track, to be inserted in the carrier pivots between the neoprene washer and the carrier itself, prior to attaching the windbreak profiles (**diagram P**).
- 7) Operate the unit back and forth for a few feet a couple of times to check it is working properly and **make sure the windbreaks, movable front bar and transmission axle are properly aligned.**
- 8) Set the limit switches of the motor according to the motor instructions. **CAUTION: on awnings with large projections (18 feet and over) it is possible that because of the thermal protection of the motor, you will not be able to complete a full cycle (open and close), since the motor will shut down after approximately 4 minutes of uninterrupted use. In this case it is advisable to use the awning only when necessary, to avoid the prolonged use of the motor. It is also possible that the setting of the limit switches will have to be done in two separate steps. Set the upper limit first, wait 10-15 minutes to allow the motor to cool down and then set the lower limit. Please note that the limits are pre-set at the factory so that only minor tweaking might be required.**
- 9) Set in position the brackets for the back fabric pocket (#53) in the most suitable place depending on the application (i.e. the back of the drawing crankcase assembly) (**diagram S**).

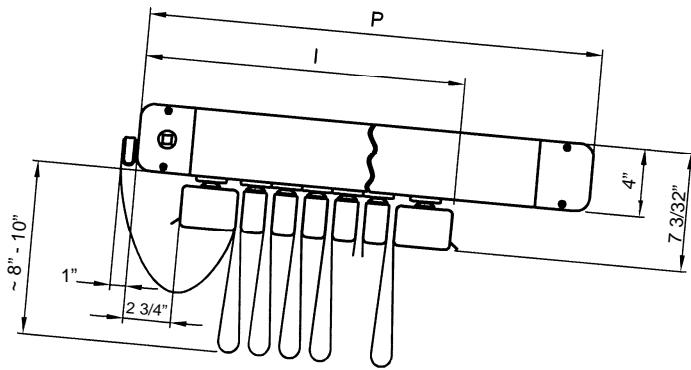
OPTIONAL PROTECTIVE HOOD

Fix the hood back profile to the wall (no hardware provided for this, choose the most suitable hardware depending on the application). By inserting one piece of the hood in the back profile, determine the position of where the front profile will have to be installed. Fix the side profiles on top of the side tracks, insert all the hood panels overlapping the last two ribs between one panel and the next, and if necessary cut to size the last panel to fit the width of the awning. Close the protective hood inserting the frontal profile/drip collector. Secure everything using the TPS 5 x 40 screws with washers and gaskets (**diagram T**).

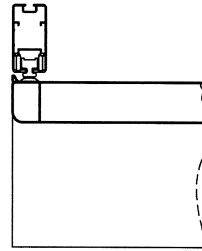
CAUTION: If installing an extra beam to the side tracks to support the front profile, drill 3 mm (1/8") holes onto the extra beam and the side tracks and secure the two parts together using the provided brackets and the KFR 4.8 x 13 mm self-tapping screws (**diagram T**). **READ WARNING SHOWN AT THE BOTTOM OF DIAGRAM T VERY CAREFULLY.**

FIRENZE RETRACTABLE PATIO COVER

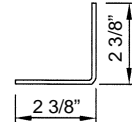
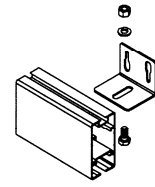
Dimensions and technical details



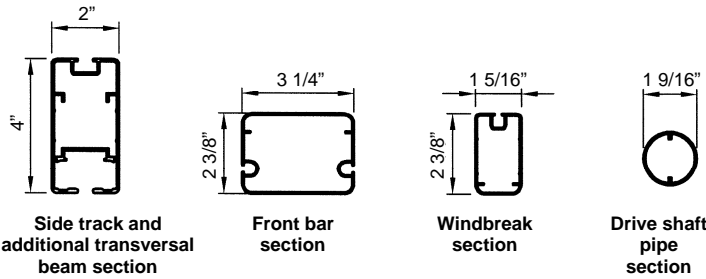
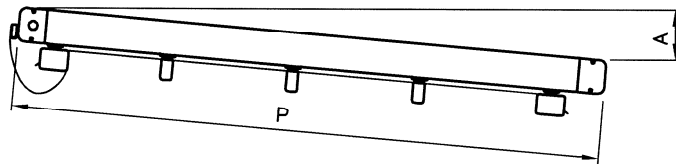
Lateral view



Frontal view



Optional "L" bracket



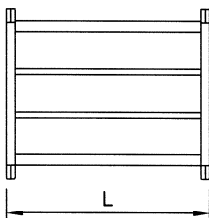
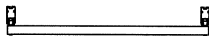
Side track and additional transversal beam section

Front bar section

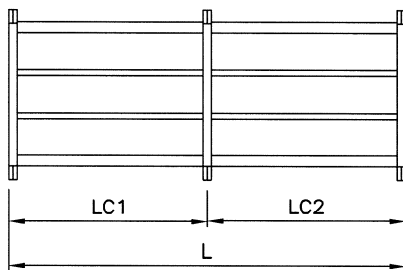
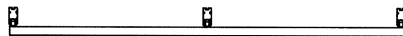
Windbreak section

Drive shaft pipe section

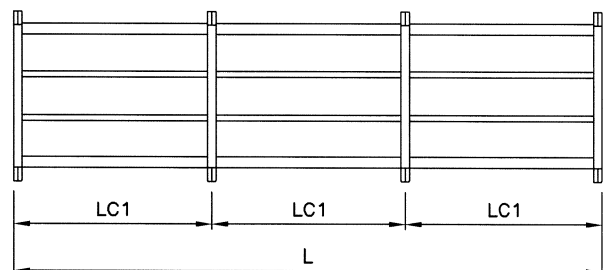
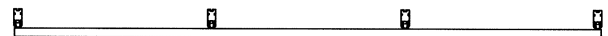
Awning projection (in.)	# of WB	# of FB	I (in.)	A min. (in.)
P = 98" (8' 2")	3	2	16 1/4	15
P = 118" (9' 10")	4	2	18 1/4	18
P = 137" (11' 5")	5	2	20	21
P = 157" (13' 1")	6	2	22	23 3/4
P = 177" (14' 9")	7	2	23 3/4	26 3/4
P = 196" (16' 4")	8	2	25 1/2	29 1/2
P = 216" (18')	9	2	27 1/2	32 1/2
P = 236" (19' 8")	10	2	29 1/2	35 1/2
P = 256" (21' 4")	11	2	31 1/2	38 1/2
P = 275" (22' 11")	12	2	33 1/2	41 1/2



1 span
(L up to 16' 4")



2 spans
(L from 14' 10" up to 29' 6")
LC1 and LC2 from 6' 7" to 16' 4"



3 spans
(L from 27' 11" up to 42' 8")
LC1 and LC2 from 6' 7" to 16' 4"

A: Minimum pitch of awning to allow front drainage

P: Maximum projection of system (excluding bracket for back fabric pocket—add 1" to P to include it)

L: Total width of system; LC1, LC2, LC3: single width of individual spans

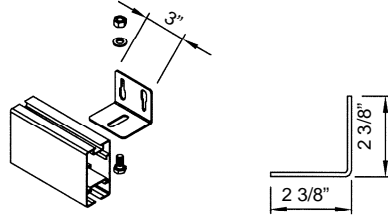
FB: Number of front bars

WB: Number of windbreaks

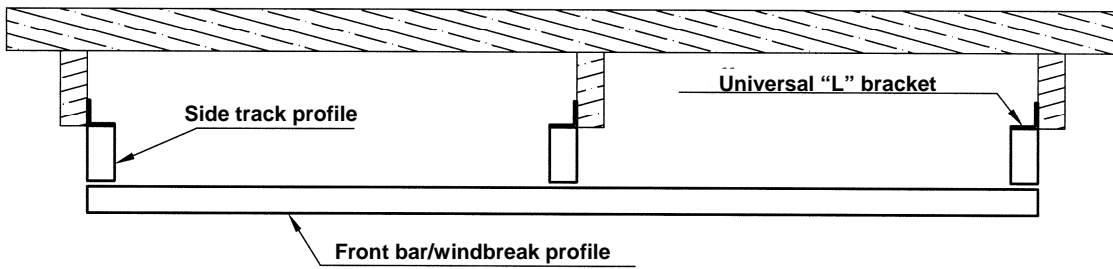
I: Stack of system when fully retracted

FIRENZE RETRACTABLE PATIO COVER

Dimensions and technical details



Optional universal "L" bracket



Example of FIRENZE installed onto existing structure

: F9BN9 RETRACTABLE PATIO COVER

Loose fabric swags configurations

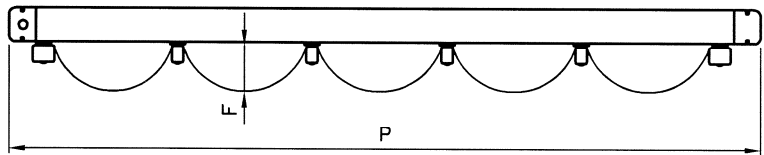
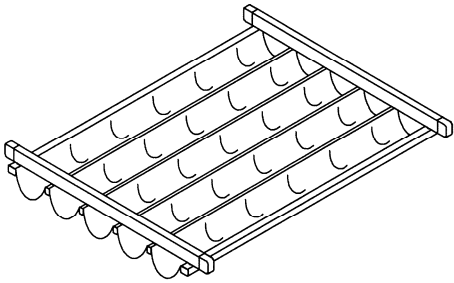
These configurations are particularly indicated on applications that have very little or no vertical inclination.

The fabric can be manufactured in three different ways:

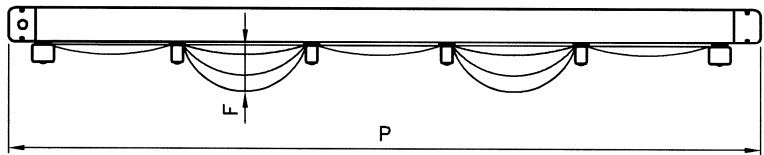
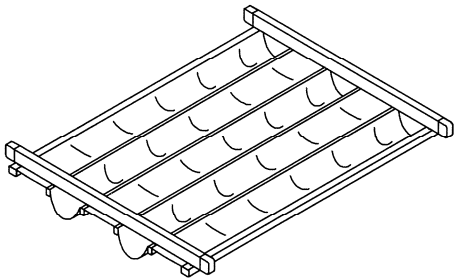
- A) Parallel loose fabric swags, NOT to be used if water drainage is needed
- B) Alternate loose fabric swags, indicated for water drainage on both sides, alternated
- C) One-sided loose fabric swags, indicated for water drainage all on one side of the awning (left or right)

All these configurations are manufactured with an additional surcharge, as indicated on the price list

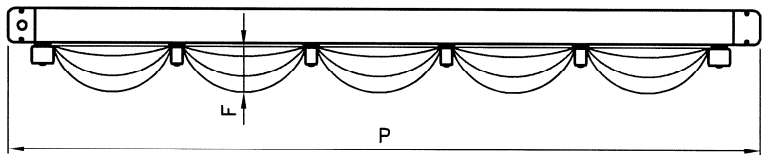
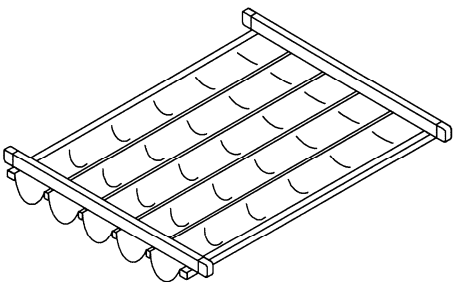
VERSION A - Parallel loose fabric swags (*F* standard = ~6")



VERSION B - Alternate loose fabric swags (left and right)



VERSION C - One-sided loose fabric swags - left (shown below) or right



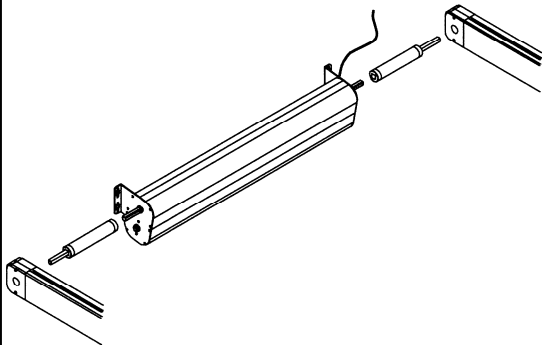
F = lateral swag of loose fabric

Minimum fabric swag dimensions (F)	
One-span units	4 inches
Two-span units	6 inches
Three-span units	8 inches

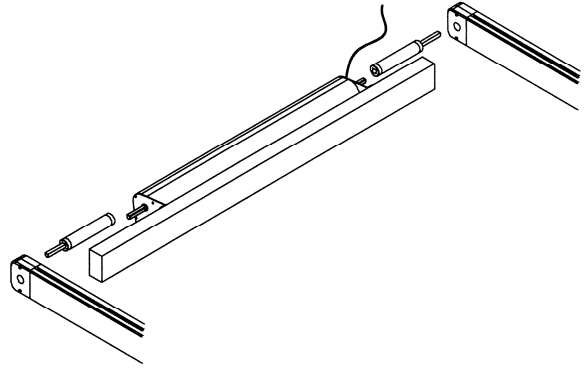
: F9BN9 RETRACTABLE PATIO COVER

Patented features

SafetyBox® motorization gear-reduction system

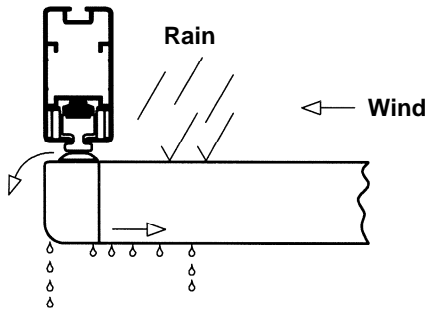


SafetyBox® installed onto wall

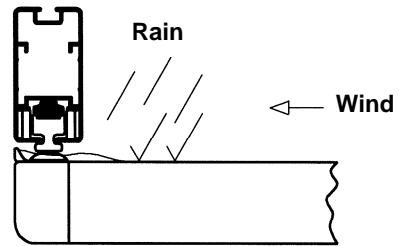


SafetyBox® installed onto additional transversal beam

Anti-Drip® system

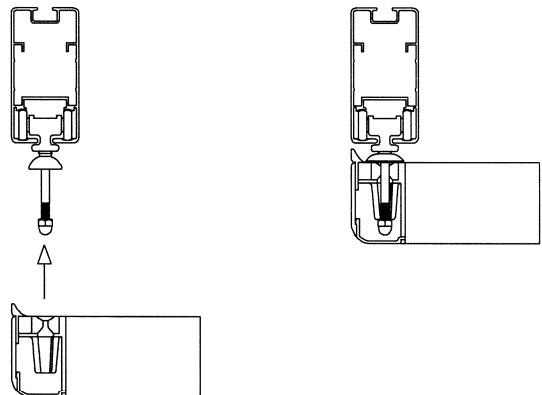
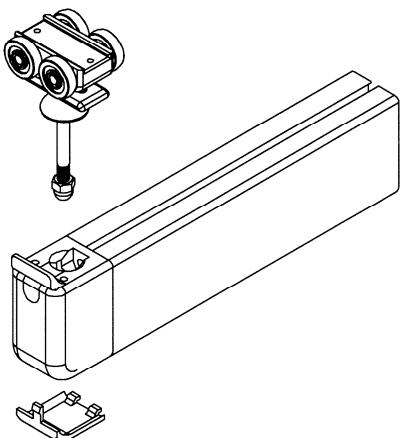


FIRENZE without anti-drip system



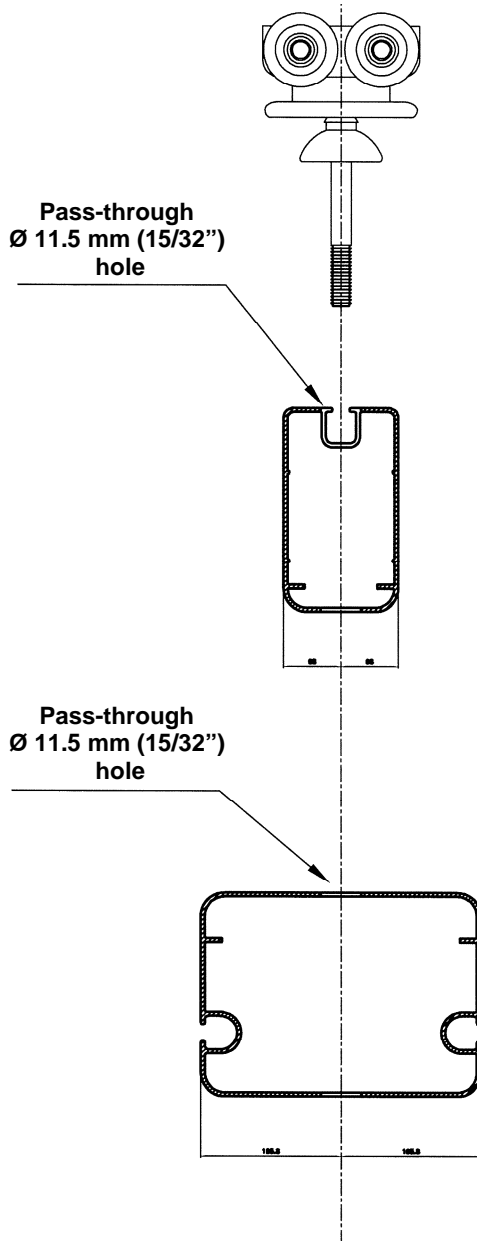
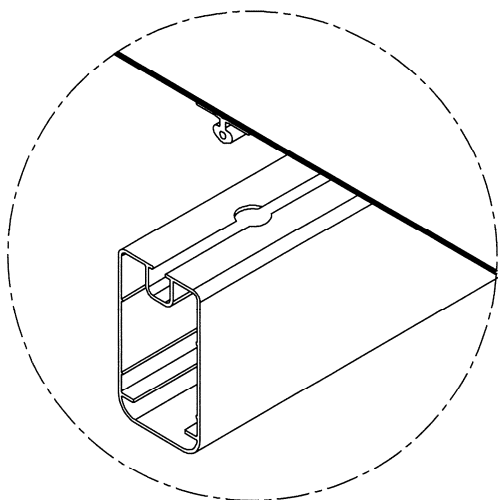
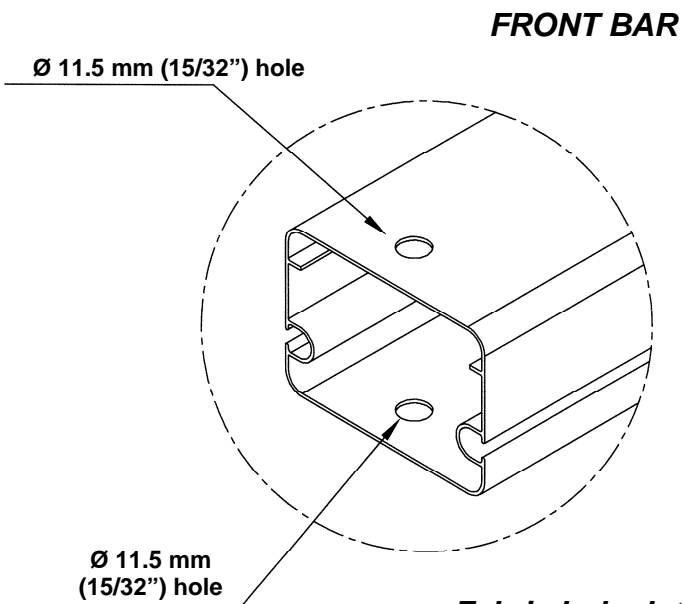
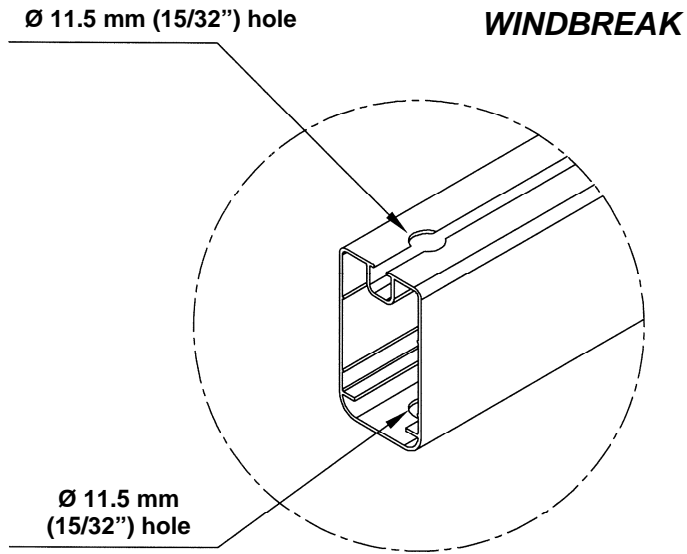
FIRENZE with anti-drip system

ClicSystem®

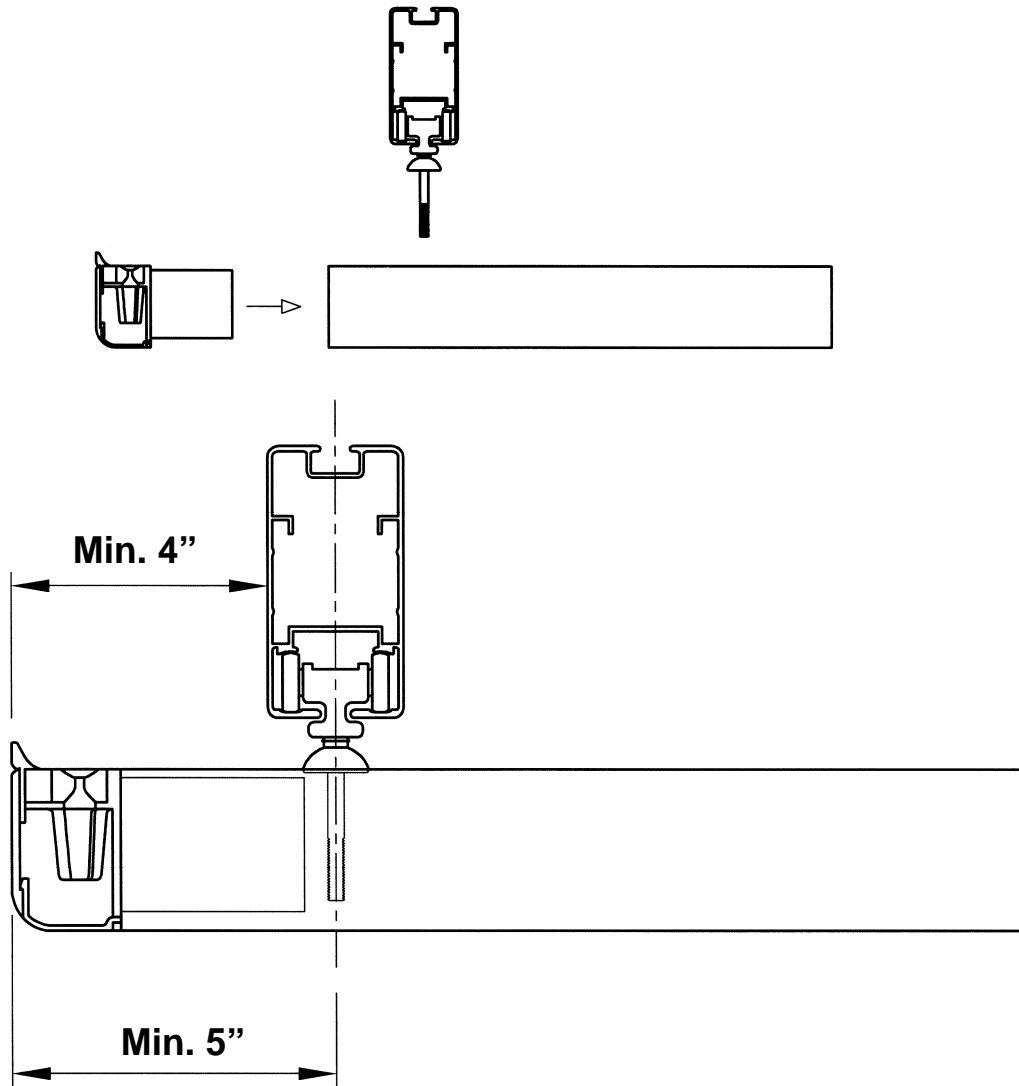


: F9BN9 RETRACTABLE PATIO COVER

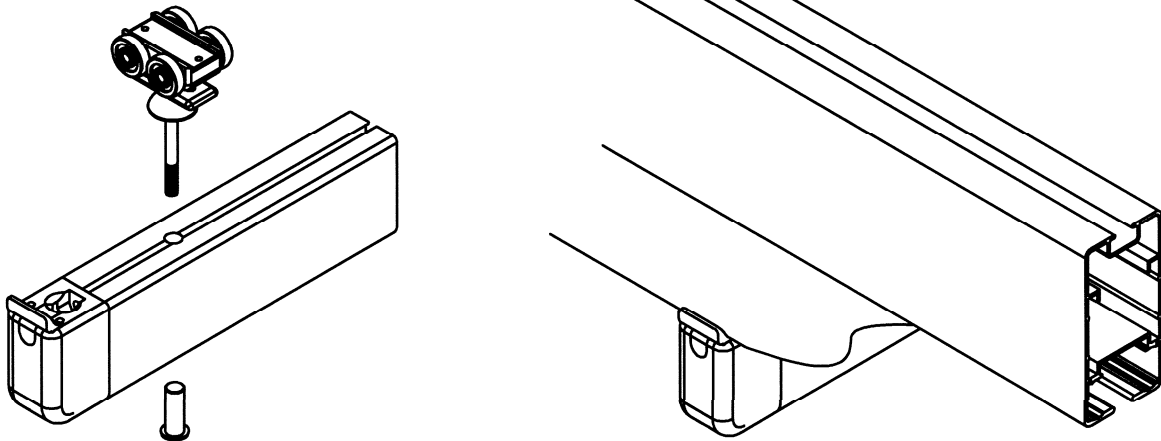
Profile and fabric drilling details



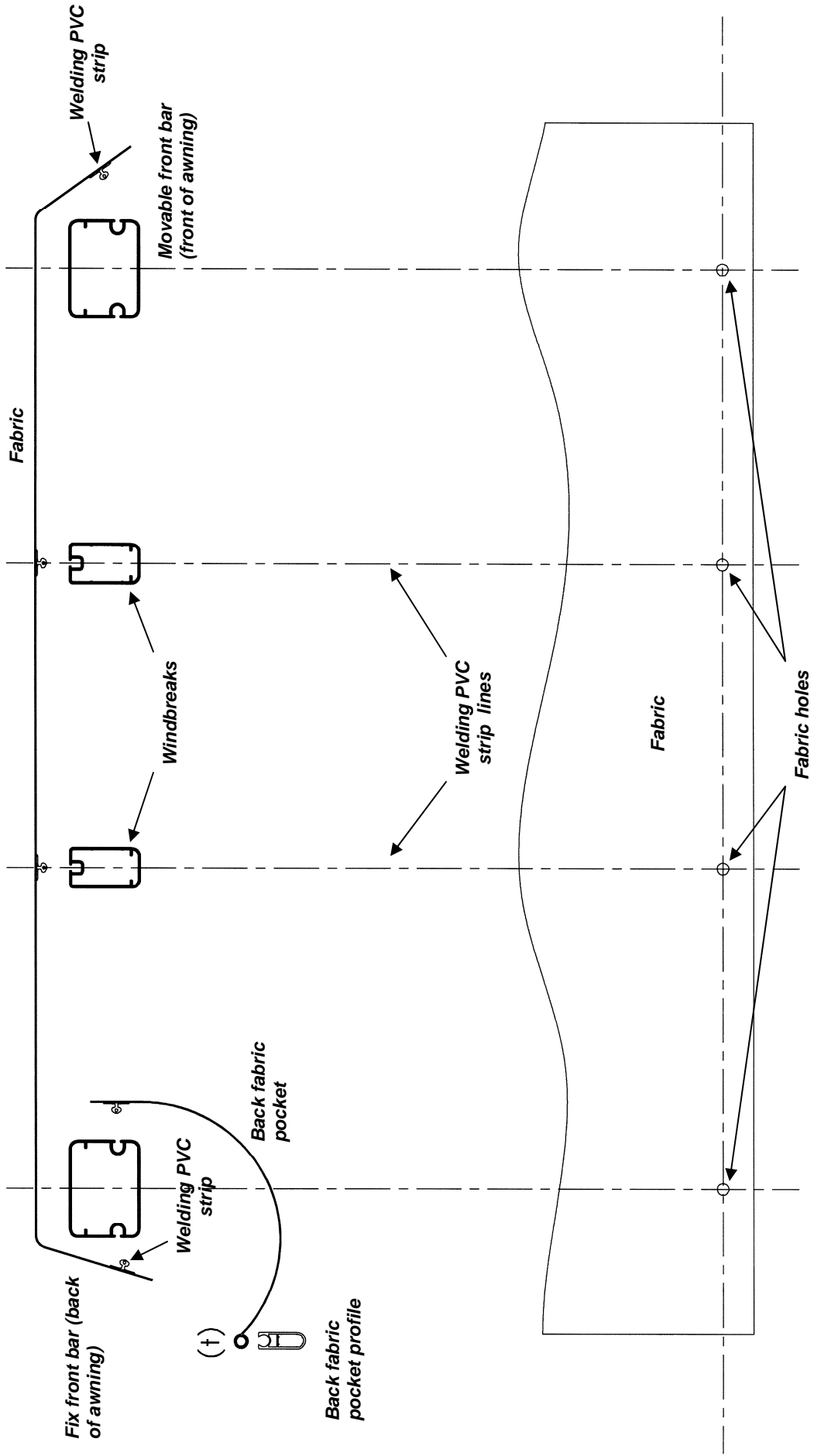
: F9BN9 RETRACTABLE PATIO COVER
Overhanging fabric configuration



No ClicSystem® available with this configuration. Carrier with DELRIN bushing must be used. (Refer to chart P)

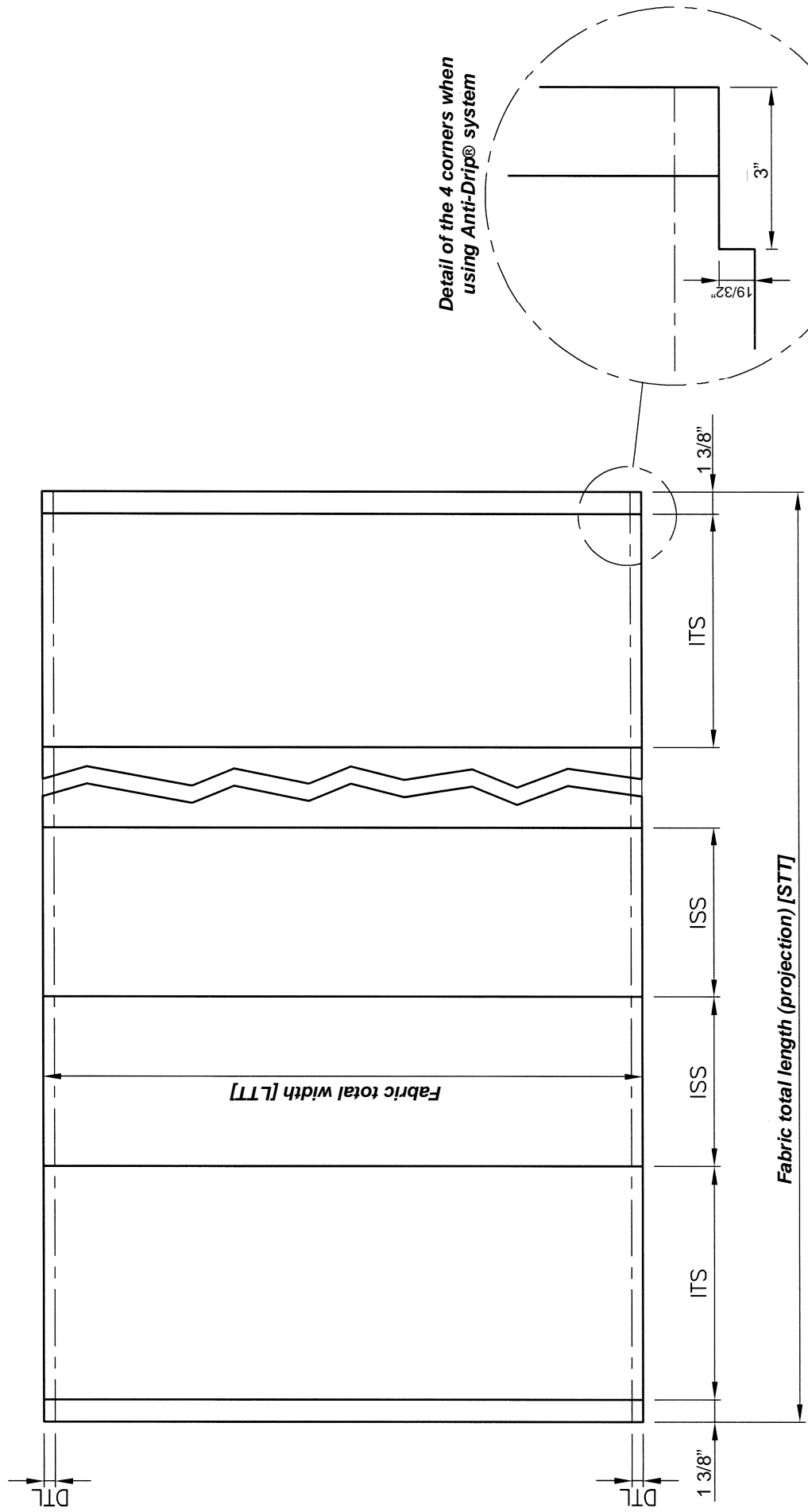


: #F9BN9 RETRACTABLE PATIO COVER
 Aluminum profiles/fabric coupling diagram



(†) PVC tubing 7.2 mm (9/32")

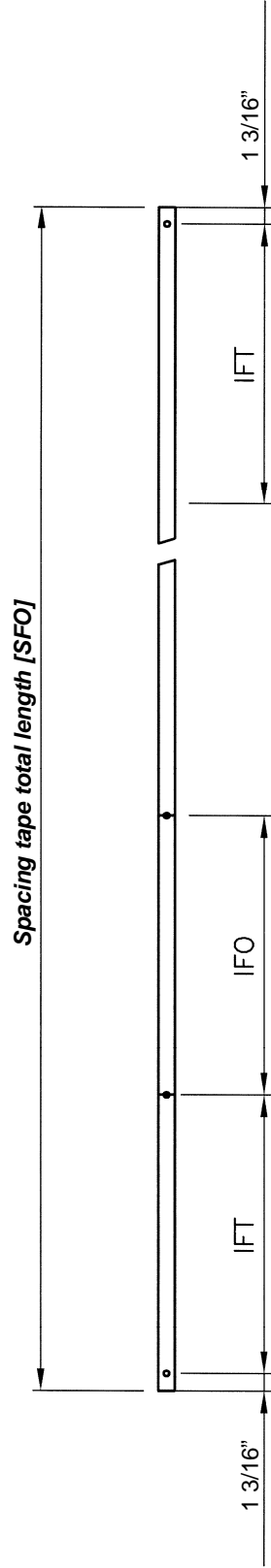
: #9BN9 RETRACTABLE PATIO COVER
Fabric measures



DTL = Distance between fabric edge and welding PVC strip (1 9/16" standard applications, 2 1/8" when using Anti-Drip® system)
 ITS = Inter-axis between welding PVC strips on outer panel sections (front and back)
 ISS = Inter-axis between welding PVC strips on intermediate panel sections

: #9BN9 RETRACTABLE PATIO COVER

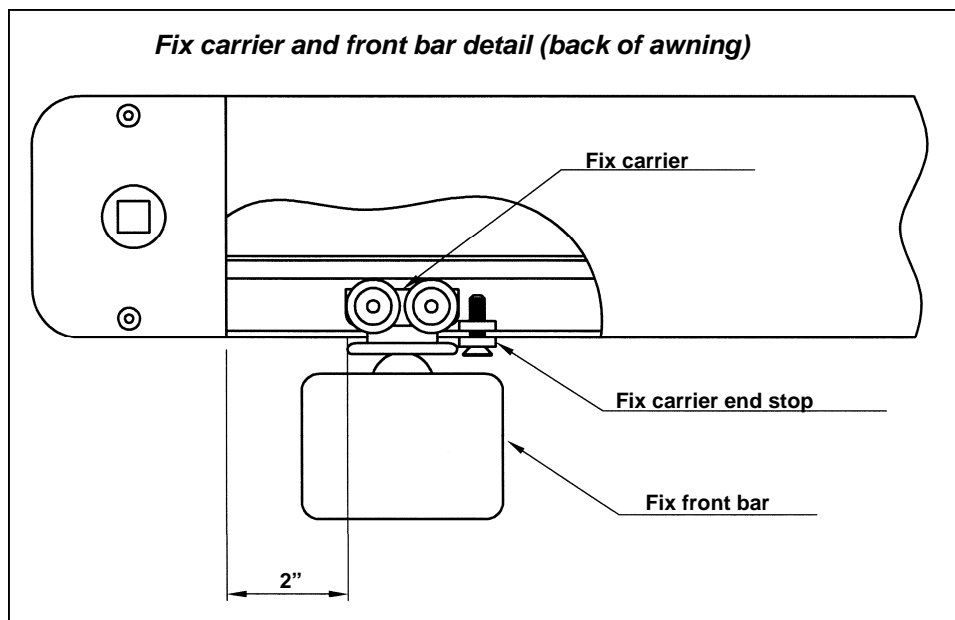
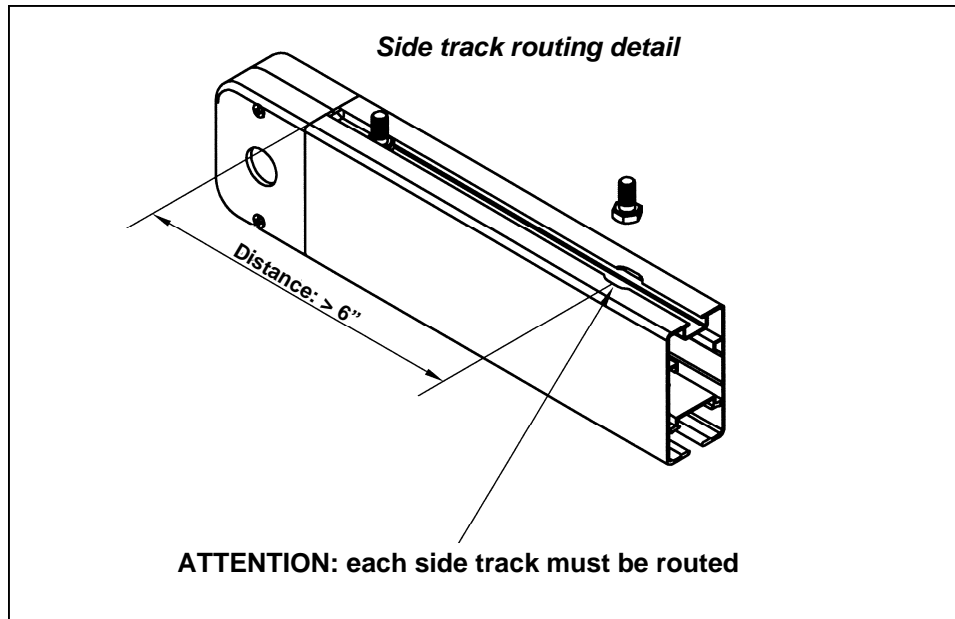
Loose fabric spacing tape measures



IFT = Inter-axis between eyelets of spacing tape on outer panel sections (front and back)

IFO = Inter-axis between eyelets of spacing tape on intermediate panel sections

FIRENZE RETRACTABLE PATIO COVER





Professional Awning
Manufacturers Association



Manufacturing Facility:

Retractableawnings.com
16255 NW 54 Avenue
Miami Gardens, Florida 33014-6106
United States of America
Telephone (305) 628-2424
Telephone Toll Free 1 (866) 438-2964
Fax (305) 623-0099
Email sales@retractableawnings.com

Instant Messaging:

GOOGLETALK -retractableawnings
SKYPE - retractableawnings
MSN - retractableawning
YAHOO - retractableawnings
AOL - retractableawn
ICQ - 166644911

