

Colorful, durable,
waterproof membrane



Applications

Drop-arm awnings, velums et pergolas, shadesails, light structures and fixed shading systems



■ Sparks creativity

- A unique satin finish to give a modern and high end look to your projects
- A palette of 40 colors to give personality to the most varied designs
- Flexibility and strength providing total freedom of shape and and size.

■ Innovation and Performance

- A weldable PVDF surface treatment improves dirt resistance
- A very smooth finish ensures easy upkeep
- Tried and tested protection against heat and bad weather for year-round comfort
- Maximum UV protection: Soltis Proof 502 blocks 100% UV rays (UPF 50+ for all colors).

■ Proven longevity

Thanks to Serge Ferrari Précontraint technology, Soltis Proof 502:

- does not tear or stretch, ensuring structures last over time
- durably resists UV damage due to rigorous pigment selection and thicker yarn crest coating than the competition.

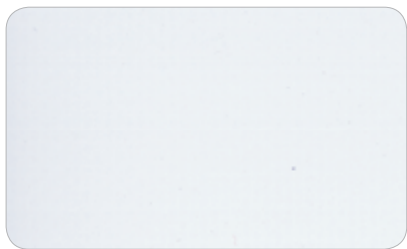
Unfailing resistance
for colorful projects





Concrete 180cm

502V2-2167C



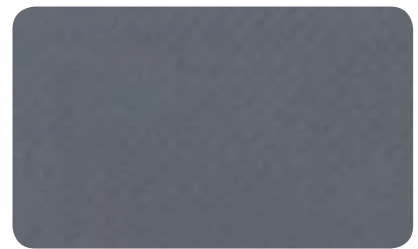
White 180cm

502V2-8102C



Boulder 180cm

502V2-2171C



Concrete 180cm

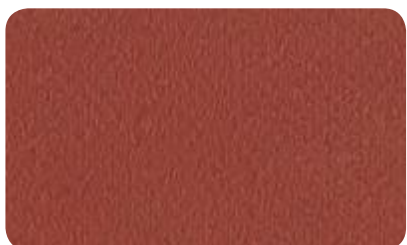
502V2-2167C



Black 180cm

502V2-8450C

Metallic colours



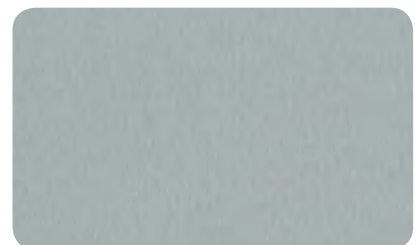
Velvet red 180cm

502V2-2152C



Autumn 180cm

502V2-2138C



Aluminium 180cm

502V2-2168C



Champagne 180cm 502V2-8341C



Vanilla 180cm 502V2-8861C



Hemp 180cm 502V2-50265C



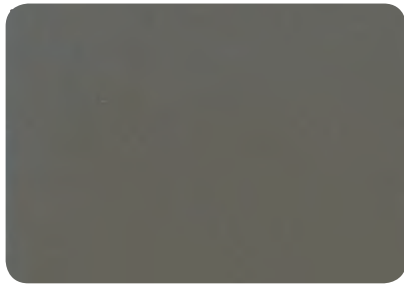
Sandy beige 180cm 502V2-2135C



Pepper 180cm 502V2-2012C



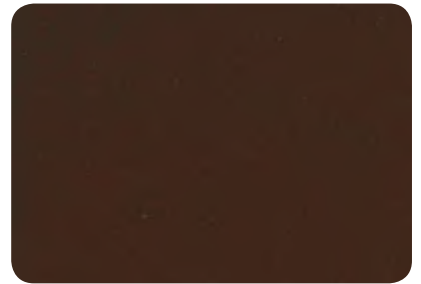
Camel 180cm 502V2-2141C



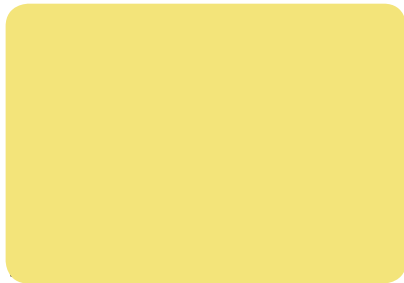
Cocoa 180cm 502V2-2148C



Teak 180cm 502V2-50669C



Walnut stain 180cm 502V2-2137C



Lemon 180cm 502V2-50674C



Buttercup 180cm 502V2-2166C



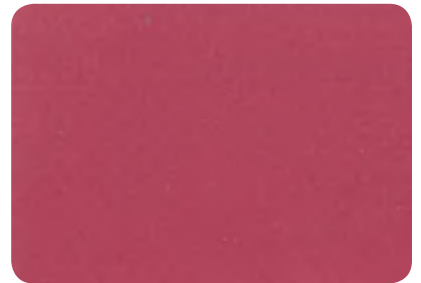
Dijon 180cm 502V2-50671C



Orange 180cm 502V2-8204C



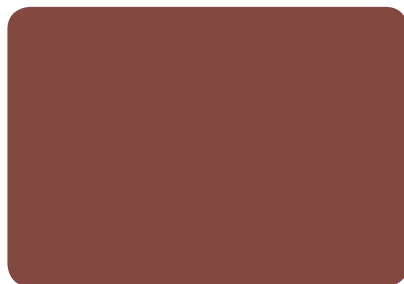
Carrot 180cm 502V2-2172C



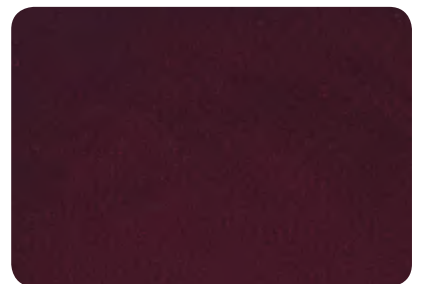
Raspberry 180cm 502V2-2150C



Poppy 180cm 502V2-8255C



Terracotta 180cm 502V2-20185C



Burgundy 180cm 502V2-8284C



Aniseed 180cm 502V2-2157C



Olive 180cm 502V2-50668C



Moss green 180cm 502V2-2158C



Porcelain green 180cm 502V2-50670C



Tennis green 180cm 502V2-8056C



Spruce 180cm 502V2-2156C



Celadon 180cm 502V2-50675C



Steel blue 180cm 502V2-50676C



Lagoon 180cm 502V2-2160C



Dark blue 180cm 502V2-50673C



Thistle blue 180cm 502V2-50270C



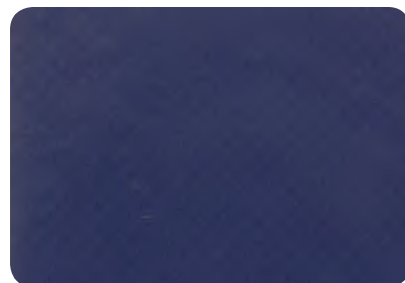
Celestial blue 180cm 502V2-50672C



Victoria Blue 180cm 502V2-50677C
















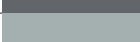
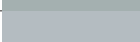

























Midnight blue 180cm 502V2-2161C



Marine 180cm 502V2-1125C

■ Solar and light properties (EN 14501)

		TS	RS	AS
502V2-1125C		6	17	77
502V2-2012C		1	38	61
502V2-2135C		5	61	34
502V2-2137C		0	18	82
502V2-2138C		2	34	64
502V2-2141C		6	49	45
502V2-2148C		1	25	74
502V2-2150C		12	45	43
502V2-2152C		7	38	55
502V2-2156C		1	15	84
502V2-2157C		10	53	37
502V2-2158C		2	36	62
502V2-2160C		5	35	60
502V2-2161C		6	28	66
502V2-2166C		15	58	27
502V2-2167C		1	27	72
502V2-2168C		1	46	53
502V2-2171C		2	51	47
502V2-2172C		14	49	37
502V2-8056C		1	18	81
502V2-8102C		11	80	9
502V2-8204C		16	47	37
502V2-8255C		18	37	45
502V2-8284C		1	18	81
502V2-8341C		11	72	17
502V2-8450C		0	16	84
502V2-8861C		4	65	31
502V2-20185C		2	28	70
502V2-50265C		1	47	52
502V2-50270C		0	16	84
502V2-50668C		1	21	78
502V2-50669C		0	11	89
502V2-50670C		1	22	77
502V2-50671C		4	42	54
502V2-50672C		2	25	73
502V2-50673C		1	18	81
502V2-50674C		10	59	31
502V2-50675C		8	59	33
502V2-50676C		8	47	45
502V2-50677C		7	34	59

TS: Solar Transmission (%)

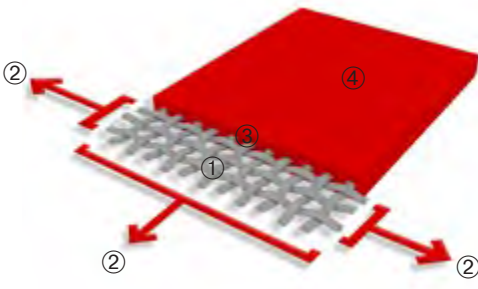
RS: Solar Reflection (%)

AS: Solar Absorption (%)

TS + RS + AS = 100% of incident energy

■ Exclusive Précontraint® technology




Patented worldwide, the Précontraint® technology by Serge Ferrari involves keeping the composite under tension throughout the manufacturing cycle. It gives our materials exceptional performance that enable them to surpass market standards in terms of dimensional stability, mechanical strength, coating thickness and flatness.



High-tenacity polyester micro-yarn base cloth	①	Superior elongation and tear resistance
A coating with fabrics under bi-axial constant tension in both warp and weft directions	②	No deformation during processing and use
Greater coating at the top of the yarns and a dirt resistant surface treatment	③	Superior aesthetic and mechanical durability
Exceptional flatness and thinness	④	Smooth finish easy to clean, space saving, easy rolling

Soltis

Proof 502

	■ Technical properties	Standards		
Weight	570 g/m ² — 16.8 oz/yd ²	EN ISO 2286-2		
Thickness	0.45 mm — 450 microns			
Width	180 cm — 70.9 in.			
■ Length of rolls				
Standard format length	40 lm — 43.74 yds			
■ Physical properties				
Tensile strength (warp/weft)	200/200 daN/5 cm	EN ISO 1421		
Tear strength (warp/weft)	20/20 daN	DIN 53.363		
Adhesion	7/7 daN/5 cm	EN ISO 2411		
■ Surface treatment				
Finish	PVDF Varnish both sides			
■ Flame retardancy				
Rating	M2/NFP 92-507 — B1/DIN 4102-1 — BS 7837 — 1530.2 et 3/AS/NZS M2/UNE 23.727-90 — VKF 5.3/SN 198898 — Schwerbrennbar Q1-Tr1/ONORM A 3800 Group 1/AS NZS 3837 — CLASS 2/UNI 9177-87 — METHOD 1 & 2/NFPA 701 CSFMT19 — CLASS A/ASTM E84 — G1/GOST 30244-94 — CAN/ULC-S109 — CPAI 84			
Euroclass	B-s2,d0	EN 13501-1		
■ Management systems				
Quality		ISO 9001		
■ Certifications, labels, warranties, recycling				
				With S+ Serge Ferrari goes further than the standards... (consult us for further information)
■ Tools and services				
— Maintenance manual available on request				

The above technical data represent average values subject to a +/-5% tolerance.

The buyer of our products is fully responsible for their application or their transformation concerning any possible third party. The buyer of our products is responsible for their implementation and installation according to the standards, workmanship and safety regulations in force in destination countries. For information on our contractual warranty, please refer to the relevant terms and conditions.

The values quoted above represent results of tests performed in compliance with common design practices and are provided for information only to enable customers to make the best use of our products. Our products are subjects to evolutions due to technical progress, we remain entitled to modify the characteristics of our products at any time. The buyer of our products is responsible for checking the validity of the above data.